

BTS

ENGINEERING

<https://prom-nasos.pro>

<https://bts.net.ua>

<https://prom-nasos.com.ua>

+38 095 656-37-57,

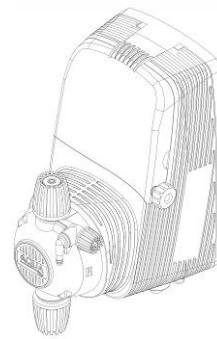
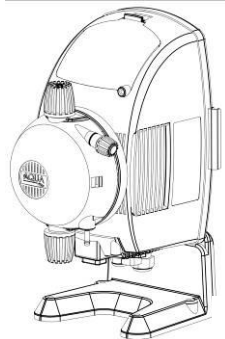
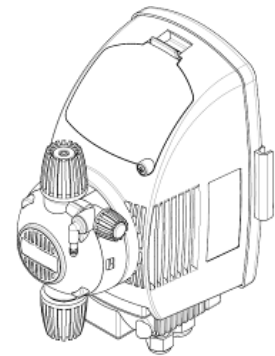
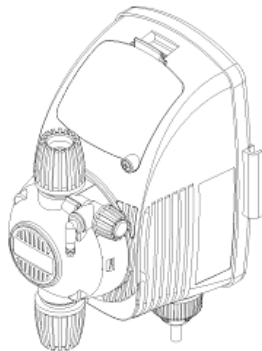
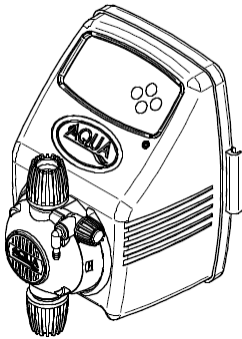
+38 067 360-71-01,

+38 063 362-12-31,

info@prom-nasos.pro

**OPERATING AND
MAINTENANCE INSTRUCTIONS**

**HC797 – HC897 – HC899
HC997- HC999- HC151**



CE



INDUSTRIAL GROUP



FILTRATION - POOLING - DETERGENT & HYGIENE - POOL EQUIPMENT



DECLARATION OF CONFORMITY

Company:	AQUA S.p.A.
Address:	Via T. Crotti, 1 - 42018 - San Martino in Rio (RE)

Hereby declares that the products named:

- **HCX97-9**

Responds to the principal features of the following European Directives:

- **2014/30/CE of 26/02/2014 - Harmonization of the laws of the Member States relating to electromagnetic compatibility – EMC Directive**
- **2014/35/CE of 26/02/2014 - Harmonization of the laws of the Member States relating to the making available on the market of electrical equipment designed for use within certain voltage limits – Low Voltage Directive**
- **2011/65/UE of 08/06/2011 with subsequent update 2015/863 of 31/03/2015 – ROHS III Directives**
- **2012/19/UE of 04/07/2012 - WEEE Directives for electrical and electronic waste**

This declaration is issued under the responsibility of Aqua S.p.A.

San Martino in Rio (RE) - 08 settembre 2020

Daide Vezzani
Certification Manager - Aqua S.p.A.

AQUA S.p.A.
 Società a partecipazione di diritto di Finanza Collocata S.p.A. - Cap. Soc. € 10.267.488,00 - Sede Sociale: Wondis
 S. Martino in Rio - 42018 - Reggio Emilia - ITALIA - Sede legale: Via Crotti, 1 - Sede operativa: Via Benzaia, 3 - Dal Rio e Fiumi 02020190290 - Pag. Imprese di RE 0202940290
 P.I. 135.062.296936 - Fax 139.0522.648160 - www.aqua.it - email: acqua@acqua.it



INDEX

1.0 GENERAL COMMENTS	4
1.1 Warnings	4
1.2 Design Standard	4
2.0 TECHNICAL CHARACTERISTICS	5
2.1 General Rules	5
2.2 Standard accessories supplied	5
2.3 Electrical characteristics	5
2.4 Electric connection	5
2.5 Hydraulic Connection	6
2.6 Principle of functioning (dimensions)	6
3.0 MAINTENANCE	7
3.1 General maintenance comments	7
3.2 Periodic maintenance	8
3.3 Basic maintenance procedures	8
3.4 Replacing worn parts	8
3.5 Commonly reported problems	9
<u>Chemical Compatibility Table</u>	10
WARRANTY CERTIFICATE	11
Dimensions	12
Connection and exploded views	17



**THIS SYMBOL INDICATES SECTIONS
TO READ CAREFULLY!**

ENGLISH

1.0 GENERAL COMMENTS

1.1 Warnings

The aim of HCX97-9 pump manual is to provide you with all the necessary information for a proper installation and maintenance in order to give you optimum results whilst in operation.

For this reason it is really important reading with attention the instructions given below since they furnish all the indications necessary for the sureness of the installation, use and maintenance



- ◆ **This manual has to be preserved with care to be consulted in whatever occasion.**
- ◆ **At the moment of the receipt you have to check the integrity of the panel and of all its components, in case of anomalies consult skilled staff before making interventions.**
- ◆ **Before the installation of the pump check that all the data on the pump's label correspond to those of the electrical plant.**
- ◆ **Do not operate with bare/naked hands or feet**
- ◆ **Do not leave the equipment exposed to the action of the atmospheric agents.**
- ◆ **Avoid splashing water**
- ◆ **The equipment has to be operated from skilled person.**
- ◆ **In case of improper functioning of the panel switch off and contact our technical assistance for any necessary repairs.**
- ◆ **For a correct functioning it is necessary to use original spare parts and original accessories. The producer declines whatever responsibility in reference with break down due to tampering or the use of not original spare parts and accessories.**
- ◆ **The electrical plant has to be in conformity with the rules of the country where it is realised.**
- ◆ **The room temperature of utilisation can't over take 45° C**

1.2 Design standard

Our pumps are built according to the actual general directives endowed with CE mark in conformity with the following European directives:

- n° 2014/30/CE "Electromagnetic compatibility – ECM"
- n° 2014/35/CE "DBT Low Voltage Directive" e s.m.i.
- n° 2011/65/UE , 2012/19/UE "direttive RoHs e WEEE" e s.m.i.

Granted this we think that in order to obtain an high trustworthiness and a lasting functioning of the pump it is necessary to follow with attention our manual particularly in reference with the maintenance!

The Producer declines all responsibility in reference with whatever intervention on the equipment from not skilled personnel!

2.0 TECHNICAL CHARACTERISTICS

ENGLISH

2.1 General rules

Install the pump:



- ◆ On an horizontal reinforcement (ex: stoking tank) or on the pump shelf (optional) so that the pump head stays always in vertical position +/-15°.
- ◆ Far from an hot source in dry places at maximum temperature of 45°C and minimum 0°C.
- ◆ In a ventilated place and easily accessible by an operator for periodical maintenance.
- ◆ At a suitable height above the chemical up to a maximum height of 1.5 meters. If for exigency of the plant it's necessary to install the pump under the level of the chemical, you need to use an injection valve or an anti siphon valve.
- ◆ Do not install the pump over the tank in presence of liquids that emanate fumes unless it is hermetically closed.

2.2 Standard accessories supplied

- ◆ 1 Foot valve / Strainer.
- ◆ 1 Injection fitting / pressure loading valve.
- ◆ 2 meters opaque PE delivery tubing.
- ◆ 2 meters PVC clear suction tubing.
- ◆ 2 meters PVC clear priming tubing

2.3 Electrical haracteristics

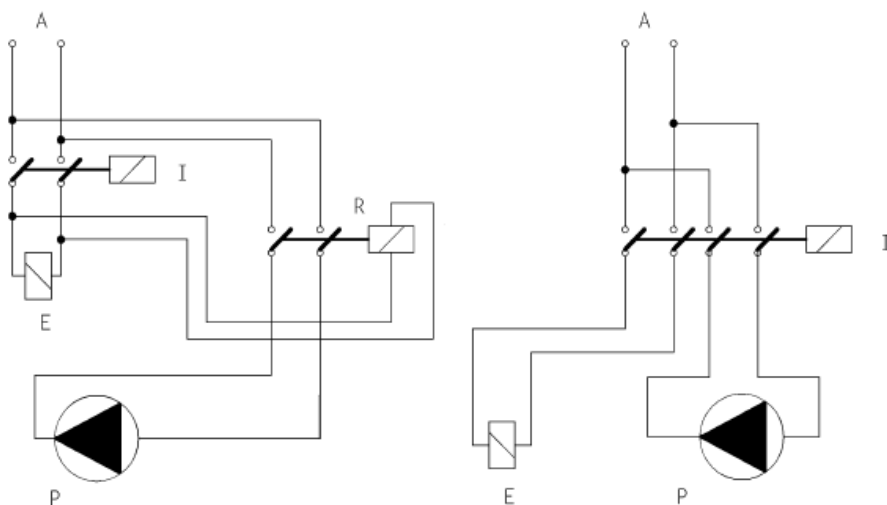
Power supply: 230 VAC 50/60 HZ

2.4 Electric connection

CAUTION !!!!!



Verify that the earth system is perfectly functional and complies with the applicable regulations. Ensure the unit is connected to a circuit protected by a highly sensitive (0.03A) RCCB circuit breaker. If unsure please consult a competent electrician. Verify that the rated values of the pump are compatible with those of the mains. Never install the pump directly in parallel with inductive loads (e.g. motors/solenoid valves) if necessary, use an isolating relay.
There are 2 protection devices inside the pump: a varistor and a fuse.



P- Metering Pump
R- Relay
I-Switcher or multi-pole security device
E- Motor or generally inductive charge
A- Supply voltage

ENGLISH

2.5 Hydraulic connection

After the exact installation of the pump (see generalities), proceed with the connection.

Suction: connect the suction tube (PVC soft cristal) to the foot filter that is supplied and put it in the hose clamp, lock the tube closing the nut. If it utilises a level probe, this one has to be connected to the filter through the support that is supplied. Put the foot filter into the liquid suction lift tank. Connect the other extremity to the suction of the pump (lower part of the pump head), unscrew the nut from the nipple, take off the rubber white disk situated on the tube connection. Let pass the tube through the nut and the adaptor for the 4x6 tube with a simultaneous action of pressing and rotating, put the tube on the nipple conical connection (hose clamp) till the end; lock up everything by closing the nuts well. See fig. 9

Delivery: connect the pump to the plant always through the injection valve (1/2"Gm) that is supplied with the installation Kit. Fit a Gf 1/2" nipple on your water supply line and after that fitting, to the point where you require chemical injection, the injection valve out with teflon and put in into the pipe. Unscrew the nut, put well the discharge tube (stiff Polyetilene) on the hose clamp of the nipple's valve, lock everything by closing the nut well.

Connect the other extremity to the delivery of the pump (upper part of the pump head), by repeating the instructions above. See fig. 9

Purge: connect another tube's extremity for the manual purge (2 mt PVC crystal) in the hose clamp situated on the pump head lower to the right, while the other extremity is to be put into the suction lift tank. See fig. 10

INSTRUCTION FOR PRIMING

For the priming of the pump in case of high against pressure in the injection, turn the purge knob for a quarter or a half of round (see fig. 10) until the head pump is completely full. Screw down again the knob.

ATTENTION!!



If it is necessary to take the pump off the plant, it is important to put the white disk in again, so as to avoid any exit of the liquid contained in the pump head from dripping out. - During the installation ensure that the discharge tubing is fixed correctly to avoid that it does not rub against hard bodies. Avoid also use less bends both on discharge and suction tubing.

- Connect the pump to the plant always through the injection valve (1/2"Gm) supplied with the installation kit.

- Connect the soft PVC tubing only in suction (on the foot filter side), instead connect the PE tubing in delivery by verifying that the cut of the tubing is clean and that lateral crushing is not caused; it is advisable to utilise a cutter instead of scissors.

2.6 Operation

The metering pump is activated by a Teflon diaphragm mounted on a piston enclosed into a electromagnet, which is fed by continuous current producing a square wave moving the piston thus, a pressure is produced in the pump body with an expulsion of liquid from the discharge valve. Once the electric impulse is over, the return of the piston is spring assisted thus producing the suction action to the initial position, with a recall of liquid through the suction valve. The material used for the construction of the pump makes it particularly suitable for aggressive liquids.

We suggest you in any case to use the compatibility tables or our technical department.

Dimensions

Series HC797 pump - wall mounting (Fig. 1)
 Series HC797 pump - base mounting (Fig. 2)
 Series HC897 pump - wall mounting (Fig. 3)
 Series HC897 pump - base mounting (Fig. 4)
 Series HC997 pump - wall mounting (Fig. 5)
 Series HC997 pump - base mounting (Fig. 6)

Series HC899-999 pump - wall mounting (Fig. 7)
 Series HC899-999 pump - base mounting (Fig. 8)

Connection and exploded views

Tubing connections on pump head (Fig. 9)
 Manual purge (Fig. 10)
 Low level switch connection (HC797-897) (Fig. 11)
 Low level switch connection (HC997-999) (Fig. 12)
 HC797 series description (Fig. 13)
 HC897 series description (Fig. 14)
 HC997 series description (Fig. 15)
 HC899-999 series description (Fig. 16)
 HC797-HC897-HC997 Pump head ball (Fig. 17- Fig. 19)
 HC899-999 Pump head ball (Fig. 18 - Fig. 20)

3.0 MAINTENANCE

3.1 General maintenance comments



Regular maintenance is essential if the pump has to give good service over a long period.

The following advice should be strictly followed:

It is difficult to estimate the periods between maintenance operations, because of the pumps operating conditions and the chemicals employed. It is therefore the basic responsibility of the operator to check regularly the appearance and condition of the pump and to clean and service it according to his findings

3.2 Periodic maintenance



Liquid's level in the tank should be monitored regularly and the tank refilled a necessary to avoid the running dry of the pump. Wet parts of the pump, foot valve, suction/delivery valves and the head and diaphragm should be inspected and cleaned at least every 3 months. Where very aggressive chemicals are being dosed, (Sodium Hypo chlorite is particularly difficult) this period may need to be reduced and cleaning be carried out more frequently. If pumps are not used for long periods, scale, sediment and encrustation deposits can build up causing the pump to malfunction. We highly recommend careful maintenance of the valves by running them under clean water after long periods of non use. Alternatively, if the pump has not been used for long periods, before re-setting up the operations, we strongly recommend operating it for at least 30 minutes with the foot filter immersed in clean water to flush the pump.

3.3 Basic maintenance procedures

Before doing any maintenance read with attention the technical and safety characteristic of the dosing chemicals and follow the next procedures:

1 Turn off the pump and immerse the foot filter and the injection tube in clean water. Turn on the pump to let the water go through the pump head. If there are some crystals to be cleaned follow the next procedures:

2 Immerse the foot filter and the injection tube into an adequate solution to remove the crystals (ex. Chloridric Acid for Sodium Hipochlorite crystals); let the pump work for some minute. Then repeat the action with water and connect the pump to the plant.

ATTENTION!!!!



It's necessary to effectuate all the operations with gloves and glasses suitable for the product used then consult the supplier of the chemical product.

3.4 Replacing worn parts

Fuse replacement.

Proceed as follows:

1. Put at minimum the knob of the piston regulation of the run (in the pump where it is present)
2. Unscrew the fixing screws of the box
3. Open the front and the back part of the box minding the spring of the knob where it is present.
4. Replace the fuse that is well visible.
5. Assemble all the parts paying attention that the piston regulation knob (where it is present) is at the minimum position and that the spring is in.

Valves cleaning HC797- HC897- HC899 - HC997- HC999

Proceed as follow:

1. With a little tool extract the valve cartridges from their seats
2. Pay attention not to loose the oring at the bottom of the cartridge
3. Clean the valve cartridge with clear water
4. For a complete cleaning it is possible to open the valve cartridge, be carefull with all the internal parts
5. Assemble again the valve cartridge following drawing fig. 13-14-15-16
6. Insert again the valves cartridges in their seats

Diaphragm and O-rings replacement

Proceed as follows:

1. Undo the 4 bolts with an hexagonal key.
2. Remove the pump head.
3. Remove the old O-ring from the head carefully using a small screw driver.
4. By hand, or with pliers if necessary unscrew the diaphragm, and replace with the new one. Hand tight only. Before screwing the diaphragm into place, add a small quantity of Loctite® 222 onto the thread.
5. Refit the dosing head, tightening the head bolts sequentially and carefully to ensure an even airtight seal. Caution do not over tighten. We also recommend adding a few drops of Loctite® 222 on to the thread of the screws that hold the head.

3.5 Commonly reported problems

THE PUMP DOES NOT FUNCTION AND THE GREEN LED IS NOT LIT.

Solutions

1. *Check that the electrical connection is correctly made.*
2. *Check that the fuse has not blown*
3. *Replace the electronic circuit with a new one.*

THE PUMP FUNCTION CORRECTLY BUT NO LIQUID IS INJECTED IN THE PLANT

Solutions

1. *Check the product level in the tank.*
2. *Check the foot filter which could be closed.*
3. *Check the injection valve is not closed.*
4. *Effectuate a maintenance of the suction and delivery valves. Parts showing any chemical attack, should be replaced, with alternative materials if necessary.*

CHEMICAL LEAKS FROM THE DOSING HEAD.

Solutions

1. *Check that the hose clamps are correctly fitted and tightened. Caution do not overtighten these components as they can easily be broken or threads stripped.*
2. *Check that the head bolts are tight and that the O-ring is in it's correct position. Replace any damaged or worn parts as necessary.*
3. *Parts showing any chemical attack, should be replaced, with alternative materials if necessary.*

ENGLISH

Chemical Compatibility Table



Dosing pumps are widely used for dosing chemical products. It is important to select the most suitable material for the liquid to be dosed. The CHEMICAL COMPATIBILITY TABLE is a precious aid to that end.

The following Table must be used as an indicative instrument. Modifications in the transported fluid composition or particular service conditions can reduce the resistance of the materials.

Product	Formula	Ceram.	PVDF	PP	PVC	Hastel.	PTFE	FPM (Viton)	EPDM (Dutral)	NBR	PE
Acetic Acid, Max 75%	CH ₃ COOH	2	1	1	1	1	1	3	1	3	1
Concentrated hydrochloric acid	HCl	1	1	1	1	1	1	1	3	3	1
Hydrofluoric acid 40%	H ₂ F ₂	3	1	1	2	2	1	1	3	3	1
Phosphoric acid, 50%	H ₃ PO ₄	1	1	1	1	1	1	1	1	3	1
Nitric acid, 65%	HNO ₃	1	1	2	3	1	1	1	3	3	2
Sulphuric acid 85%	H ₂ SO ₄	1	1	1	1	1	1	1	3	3	1
Sulphuric acid 98.5%	H ₂ SO ₄	1	1	3	3	1	1	1	3	3	3
Amines	R-NH ₂	1	2	1	3	1	1	3	2	3	1
Sodium bisulphite	NaHSO ₃	1	1	1	1	1	1	1	1	1	1
Sodium carbonate (Soda)	Na ₂ CO ₃	2	1	1	1	1	1	2	1	1	1
Iron chloride	FeCl ₃	1	1	1	1	1	1	1	1	1	1
Calcium hydroxide	Ca(OH) ₂	1	1	1	1	1	1	1	1	1	1
Sodium hydroxide (Caustic soda)	NaOH	2	1	1	1	1	1	2	1	2	1
Calcium hypochlorite	Ca(OH) ₂	1	1	1	1	1	1	1	1	3	1
Sodium hypochlorite, 12.5%	NaOCl + NaCl	1	1	2	1	1	1	1	1	2	2
Potassium permanganate 10%	KMnO ₄	1	1	1	1	1	1	1	1	3	1
Hydrogen peroxide, 30%	H ₂ O ₂	1	1	1	1	1	1	1	2	3	1
Aluminium sulphate	Al ₂ (SO ₄) ₃	1	1	1	1	1	1	1	1	1	1
Copper sulphate	CuSO ₄	1	1	1	1	1	1	1	1	1	1

Component with *excellent resistance* -1-

Component with *fair resistance* -2-

Non-resistant component -3-

Construction materials of pump and accessories

Polyvinylidene fluoride (PVDF) Pump body, valves, fittings, tubes
 Polypropylene (PP) Pump body, valves, fittings

PVC Pump body
 Hastelloy C-276 (Hastelloy) Injection valve spring
 Polytetrafluoroethylene (PTFE) Diaphragm
 Polyethylene (PE) Tubes

Disclaimer

The information included in these tables has been obtained from highly qualified sources which we deem reliable and they are provided without any guarantee, explicit or implicit, concerning their exactness.

Conditions or methods for handling, storage and use of the material are beyond our control and/or knowledge.

For this reason and for other reasons we will not be held liable thereof and we expressly waive obligations of claim for damages or relating to the information contained herein.

WARRANTY CONDITIONS

The pumps are warranted to be free from defects in workmanship and material for a period from the delivery date to the first purchaser.

Within the above stated period the producer will supply free of charge any part that upon examination by the producer or by an authorised dealer, is disclosed to have been defective in workmanship or material, or at its option, it will repair the parts directly or through authorised workshops. It remains anyway excluded from whatever responsibility and obligation for others costs, damages and direct or indirect losses that come from the use or the non-use availability, either total or partial.

The reparation or the supply in substitution will neither extend nor renew the period of guarantee. They remain anyway at charge of the purchaser the costs of plant pumps mounting and disassembling, transport cost and using materials (filters, valves, and so on).

Producer's duties, as above, are not valid when:



- ◆ **The pumps are not used according to the producer instructions as in the operating manual and maintenance instructions;**
- ◆ **The pumps are repaired, disassembled, modified by workshop not authorised;**
- ◆ **They have used not original spare parts**
- ◆ **The injection plants are damaged by products that are not suitable;**
- ◆ **The electric plants have been damaged because of external causes such as whatever type of over tensions.**

AT THE END OF THE WARRANTY PERIOD FROM THE DELIVERY DATE, THE PRODUCER WILL BE FREE FROM ANY LIABILITY AND FROM ALL THE DUTIES AS ABOVE!

**DIMENSIONI - DIMENSIONS - DIMENSIONS – DIMENSIONES -
ABMESSUNGEN - РАЗМЕРЫ**

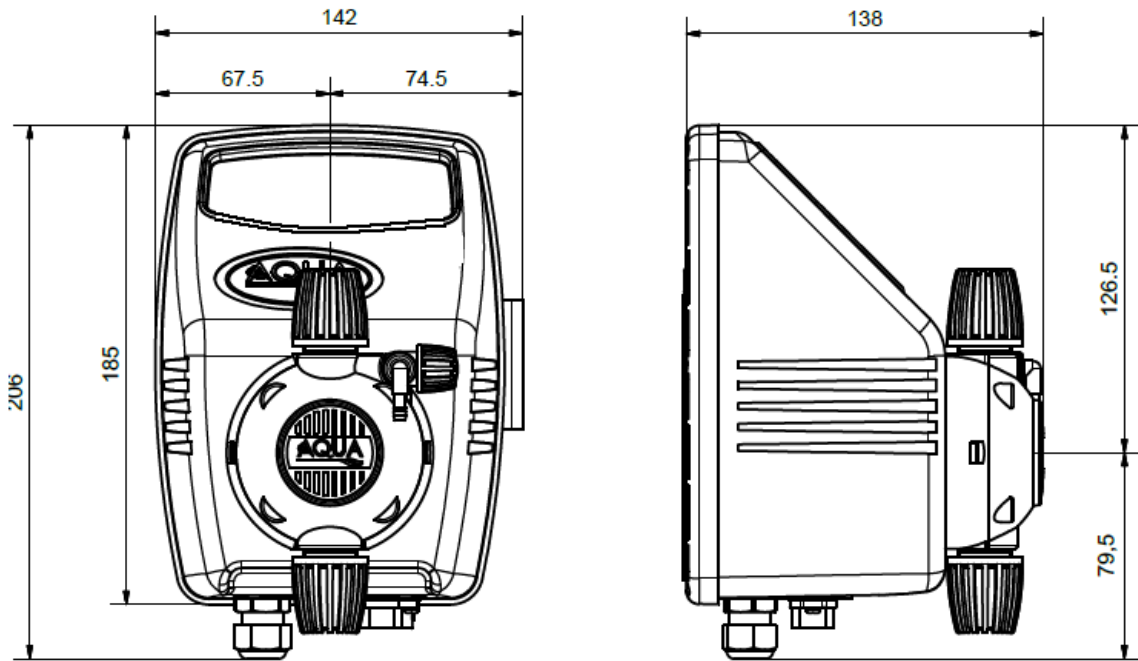
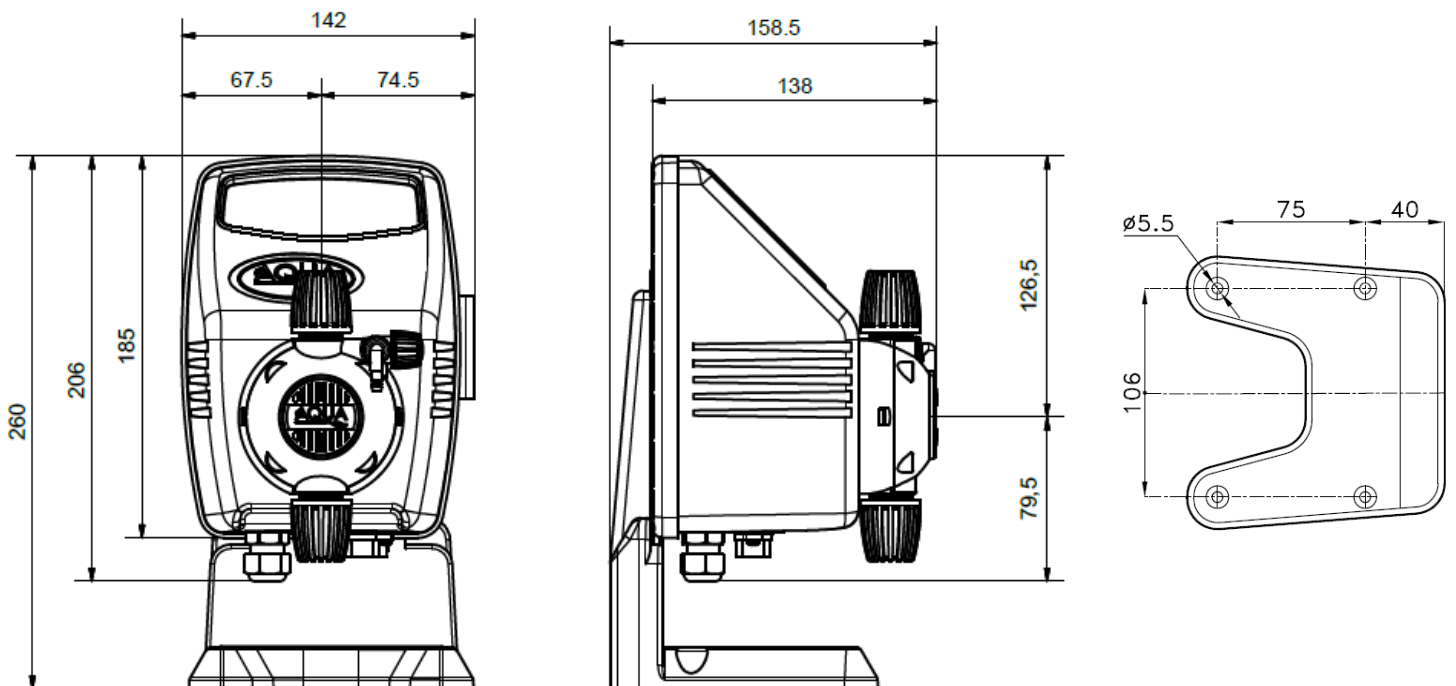


Fig. 1 SERIE “HC 797” A MURO / WALL MOUNTING / VERSION A PAROI / VERSION A PARED / WANDMONTAGE / НАСТЕННЫЙ



**Fig. 2 SERIE “HC 797” CON BASE / BASE MOUNTING / VERSION AVEC BASE
VERSION CON SOPORTE PARA MONTAJE ORIZONTAL / MIT BASIS / С ПОДСТАВКОЙ**

**DIMENSIONI - DIMENSIONS - DIMENSIONS - DIMENSIONES -
ABMESSUNGEN - РАЗМЕРЫ**

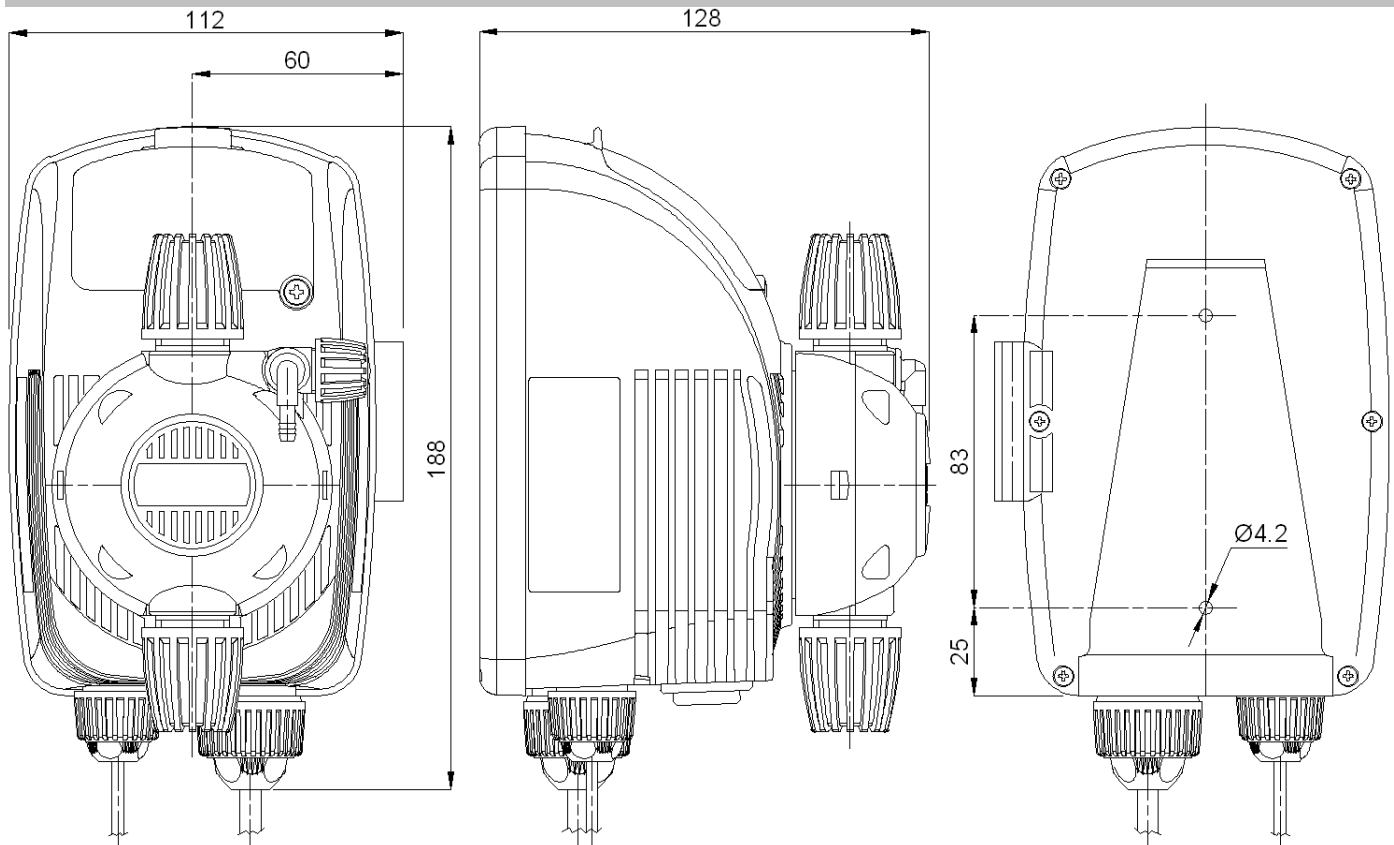
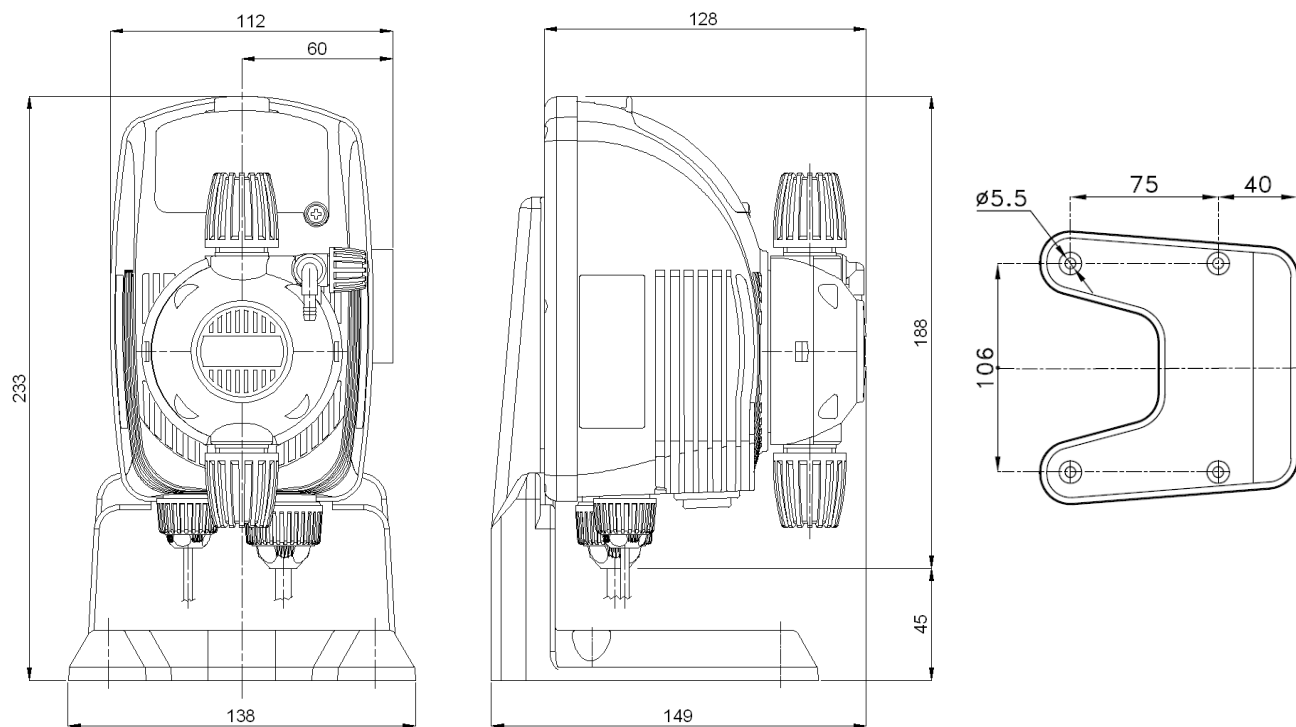


Fig. 3 SERIE "HC 897" A MURO / WALL MOUNTING / VERSION A PAROI / VERSION A PARED/ WANDMONTAGE / НАСТЕННЫЙ



**Fig. 4 SERIE "HC 897" CON BASE / BASE MOUNTING / VERSION AVEC BASE
VERSION CON SOPORTE PARA MONTAJE ORIZONTAL / MIT BASIS / С ПОДСТАВКОЙ**

DIMENSIONI - DIMENSIONS - DIMENSIONS - DIMENSIONES

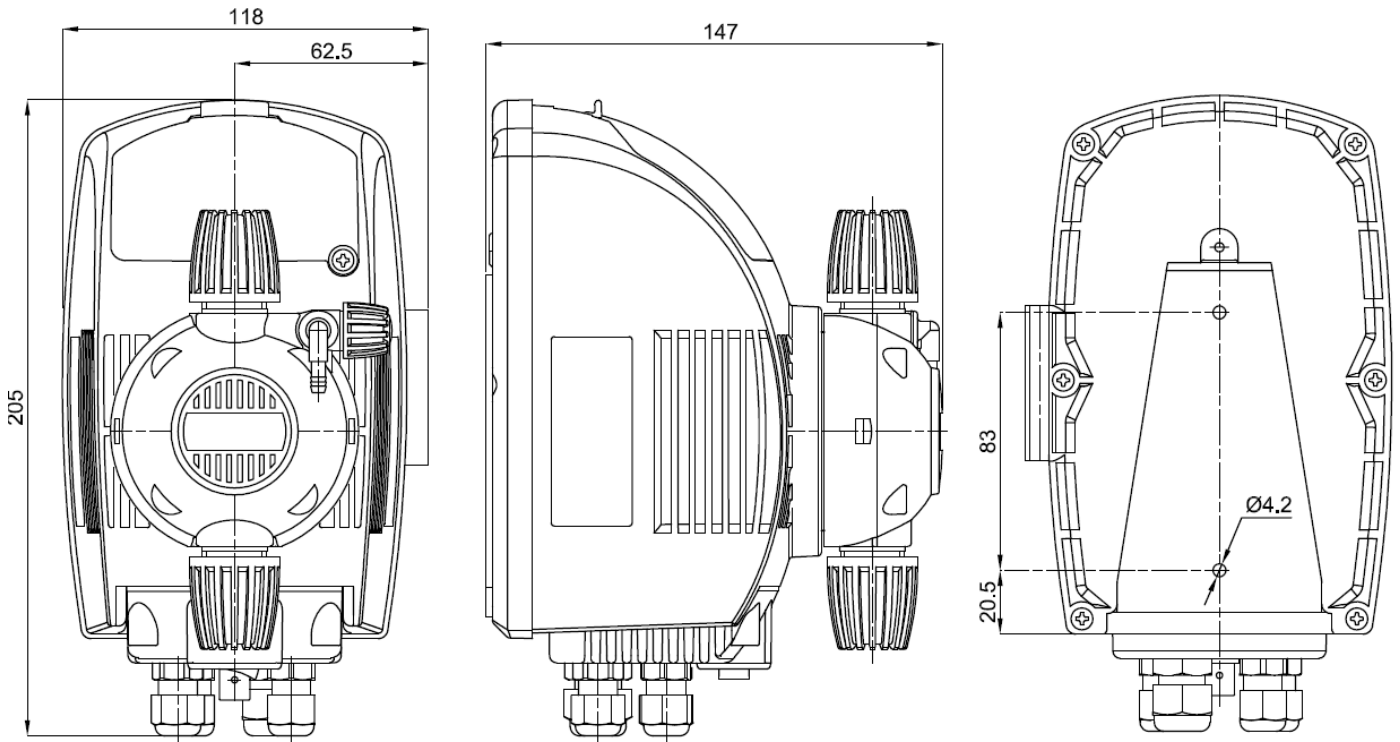


Fig. 5 SERIE "HC 997" A MURO / WALL MOUNTING / VERSION A PAROI / VERSION A PARED / WANDMONTAGE / НАСТЕННЫЙ

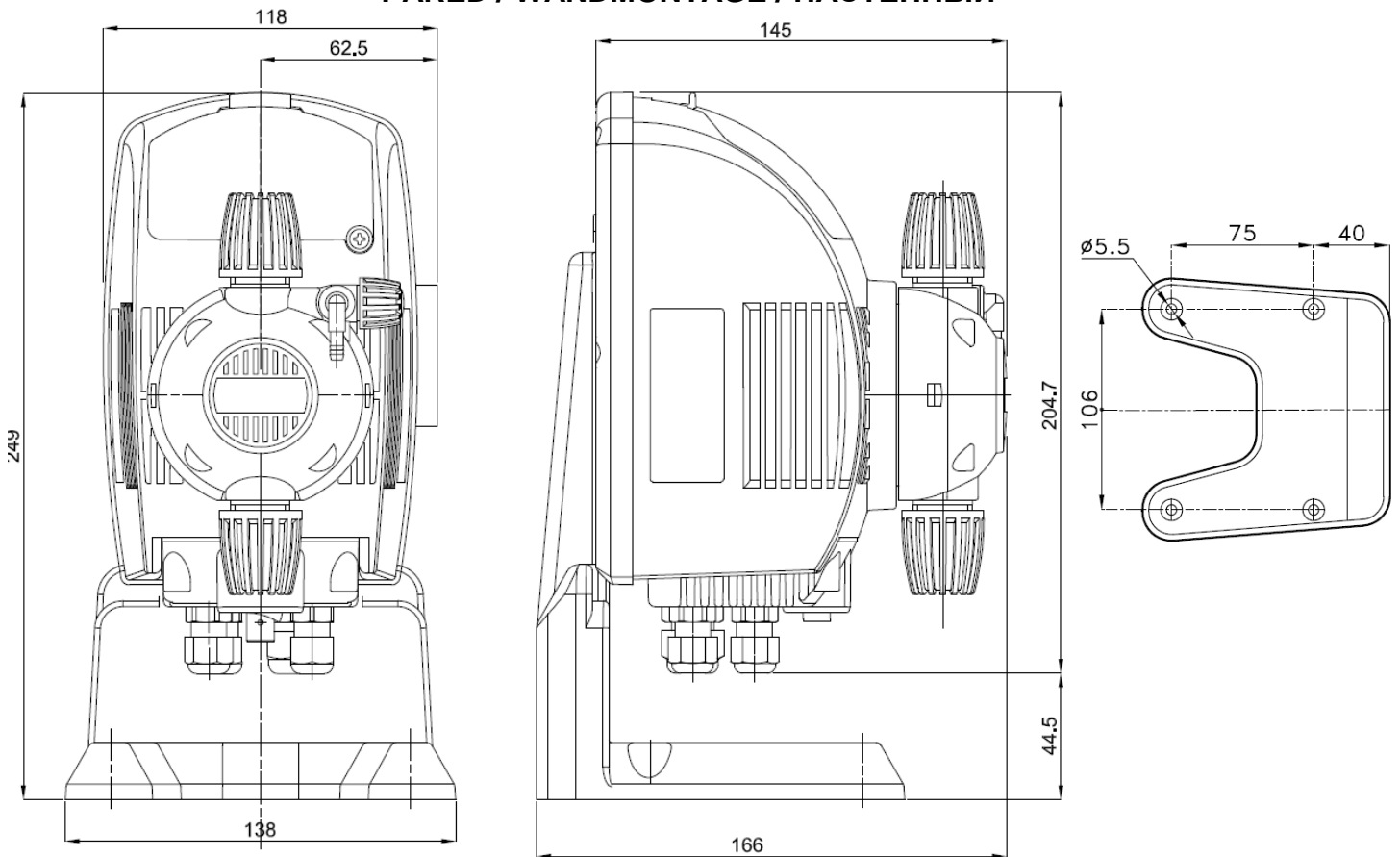


Fig. 6 SERIE "HC 997" CON BASE / BASE MOUNTING / VERSION AVEC BASE / VERSION CON SOPORTE PARA MONTAJE ORIZONTAL / MIT BASIS / С ПОДСТАВКОЙ

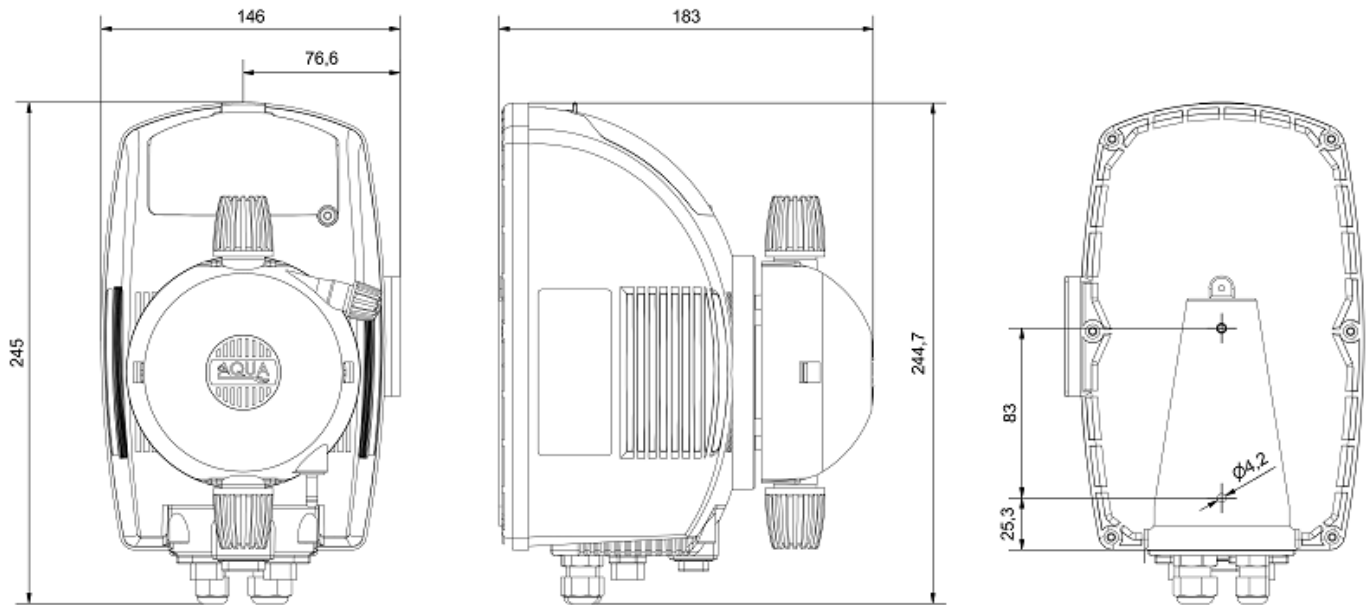


Fig. 7 SERIE “HC899-999” A MURO / WALL MOUNTING / VERSION A PARI / VERSION A PARED / WANDMONTAGE / НАСТЕННЫЙ

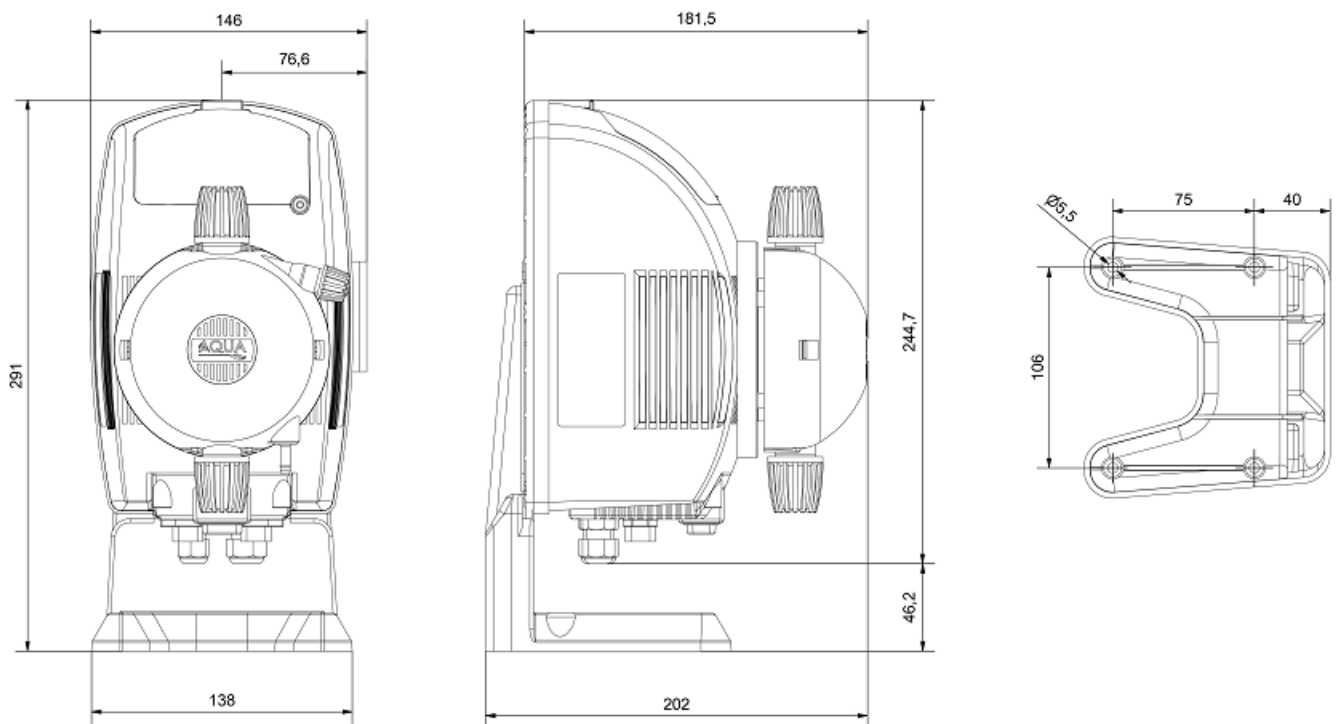


Fig. 8 SERIE “HC899-999” CON BASE / BASE MOUNTING / VERSION AVEC BASE / VERSION CON SOPORTE PARA MONTAJE ORIZONTAL / MIT BASIS / С ПОДСТАВКОЙ

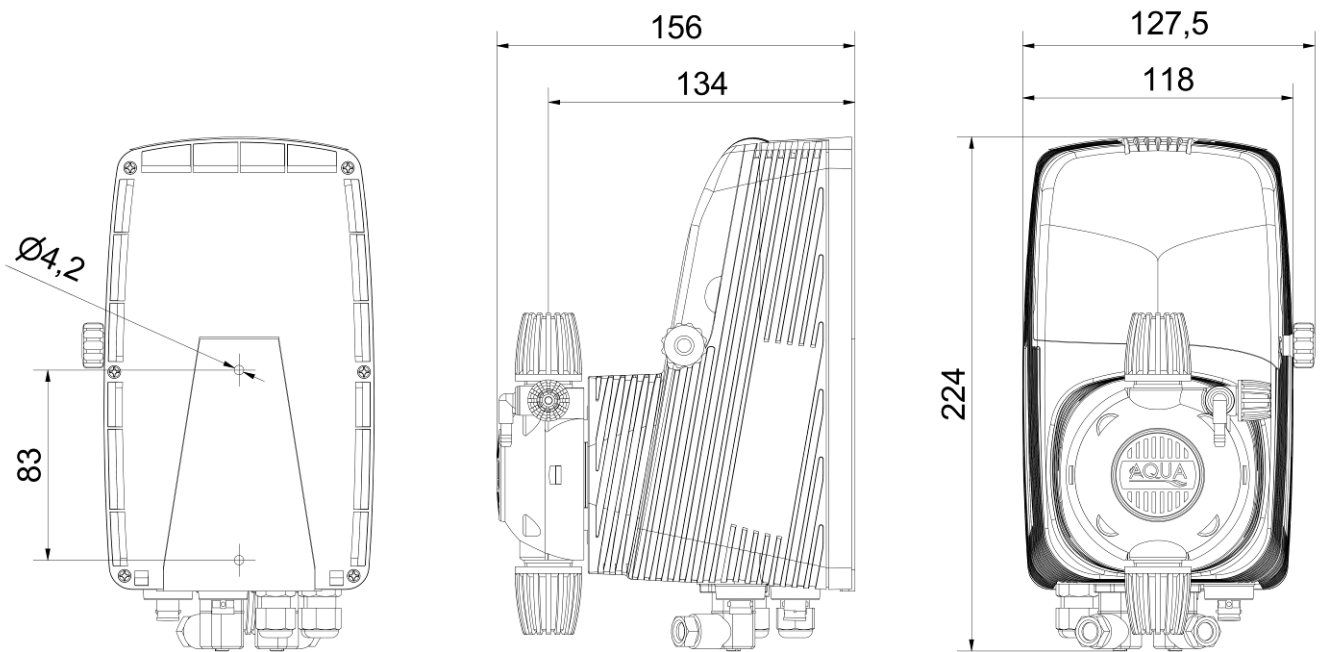


Fig. 9 SERIE "HC151" A MURO / WALL MOUNTING / VERSION A PAROI / VERCION A PARED / WANDMONTAGE / НАСТЕННЫЙ

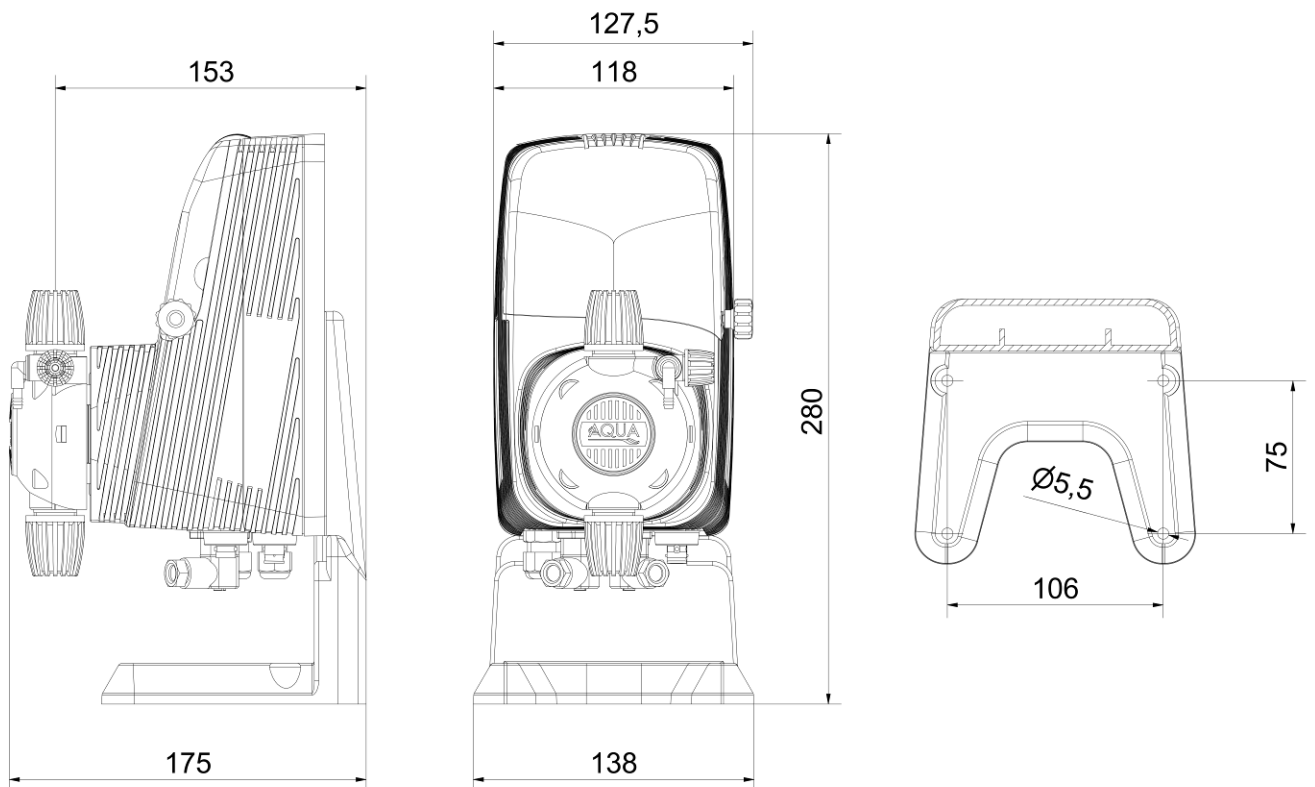
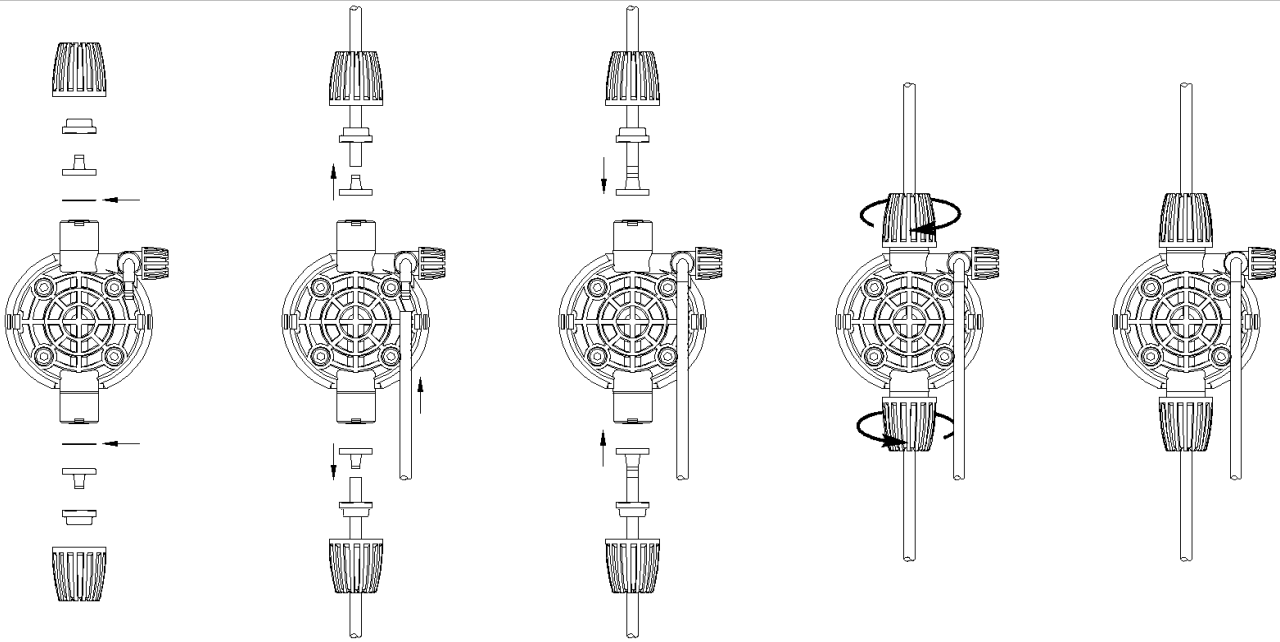
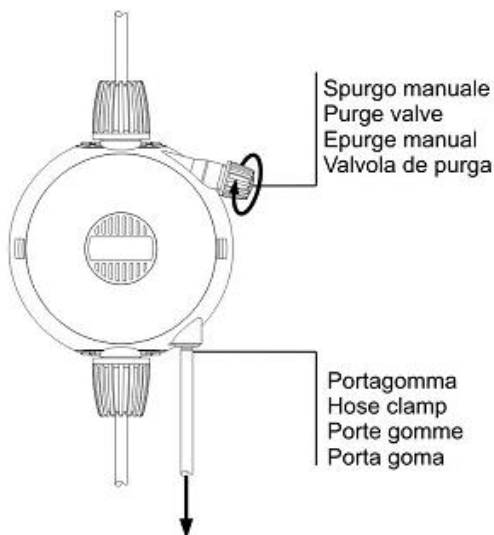


Fig. 10 SERIE "HC151" CON BASE / BASE MOUNTING / VERSION AVEC BASE / VERSION CON SOPORTE PARA MONTAJE ORIZONTAL / MIT BASIS / С ПОДСТАВКОЙ

**COLLEGAMENTI ED ESPLOSI - CONNECTION AND EXPLODED VIEWS -
 CONNECTIONS ET EXPLOSE - DIBUJOS - ANSCHLÜSSE UND
 EXPLOSIONSZEICHNUNGEN - СОЕДИНЕНИЯ И ЧЕРТЕЖИ**



**Fig. 11 COLLEGAMENTI TUBI SUL CORPO POMPA - PUMP HEAD TUBING CONNECTIONS
 SCHÉMA DE MONTAGE CONNECTIONS EXTERNES - ESQUEMA DE MONTAJE
 CONNEXIONESTERNAS - SCHLAUCHANSCHLÜSSE AM PUMPENKÖRPER - СОЕДИНЕНИЯ
 ШЛАНГОВ НА ГОЛОВКЕ НАСОСА**



**Fig. 12 SPURGO MANUALE - MANUAL PURGE
 EPURGE MANUELLE - ESPURGO
 MANUAL- MANUELLE SPÜLUNG -
 РУЧНОЙ СЛИВ**

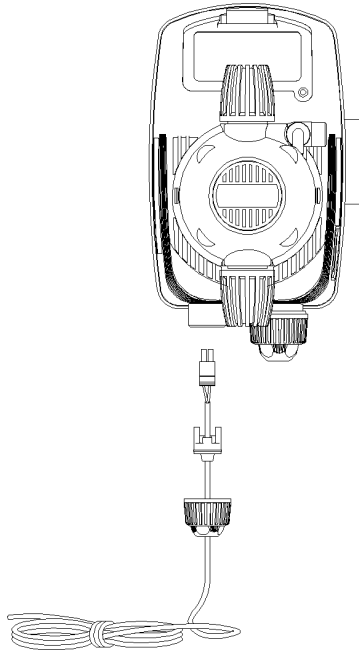


Fig. 13 HC797-897 COLLEGAMENTO SONDA DI LIVELLO - LOW LEVEL PROBE CONNECTION - SCHÉMA DE MONTAGE SONDE DE NIVEAU - ESQUEMA DE MONTAJE SONDA DE NIVEL – OPTIONAL- ANSCHLUSS DER NIVEAUSONDE - ПОДСОЕДИНЕНИЕ ДАТЧИКА УРОВНЯ – ДОПОЛНИТЕЛЬНАЯ ОПЦИЯ

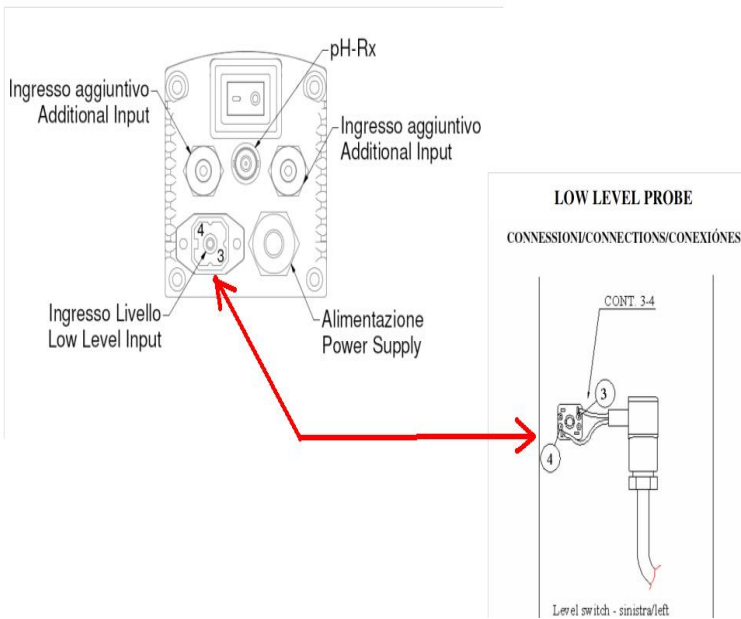
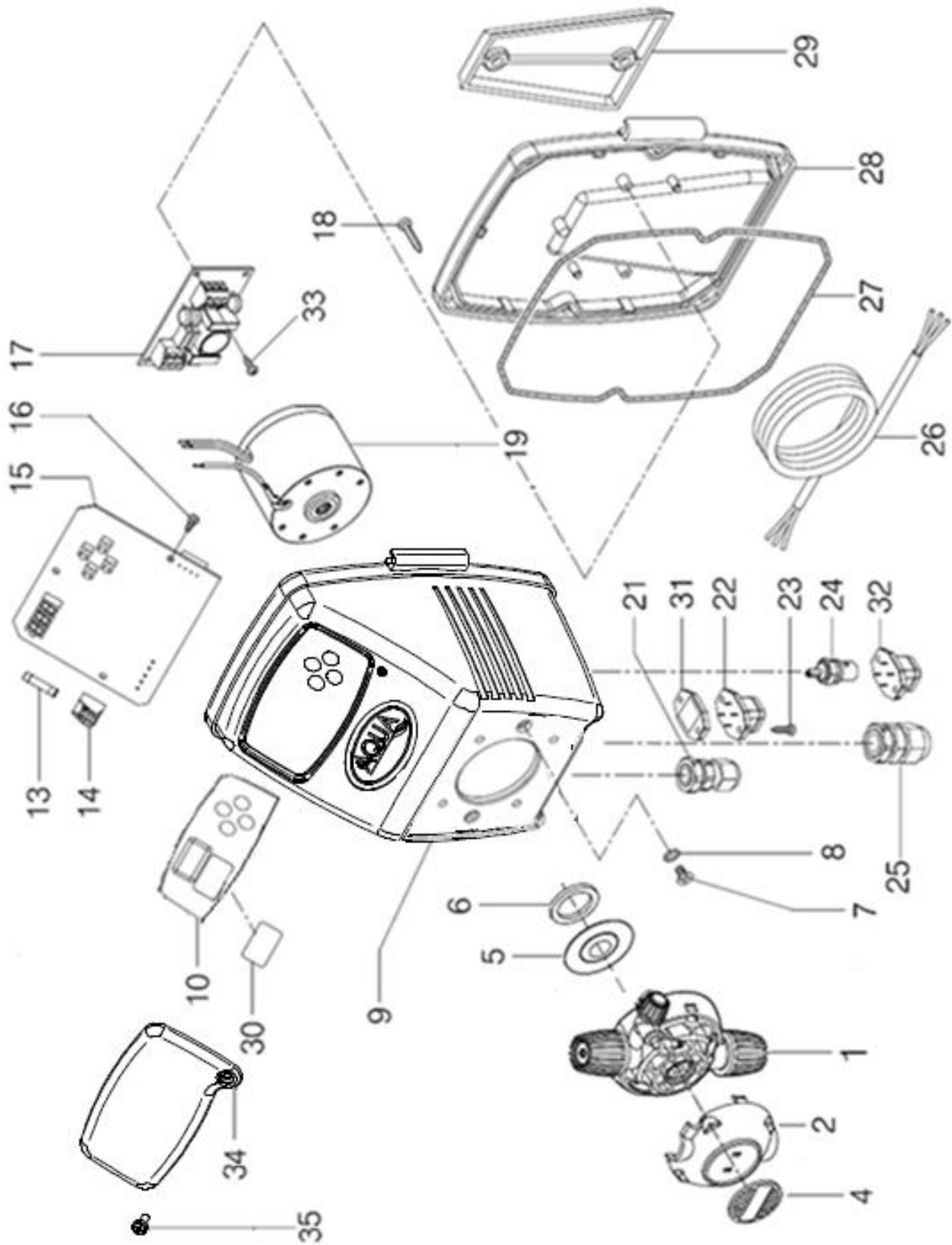


Fig. 14 HC997-999 COLLEGAMENTO SONDA DI LIVELLO - LOW LEVEL PROBE CONNECTION - SCHÉMA DE MONTAGE SONDE DE NIVEAU - ESQUEMA DE MONTAJE SONDA DE NIVEL – OPTIONAL- ANSCHLUSS DER NIVEAUSONDE - ПОДСОЕДИНЕНИЕ ДАТЧИКА УРОВНЯ – ДОПОЛНИТЕЛЬНАЯ ОПЦИЯ

Fig. 15 SERIE HC 797 - Esploso / Description / Explose / Dibujo / Explosionszeichnung / Чертеж



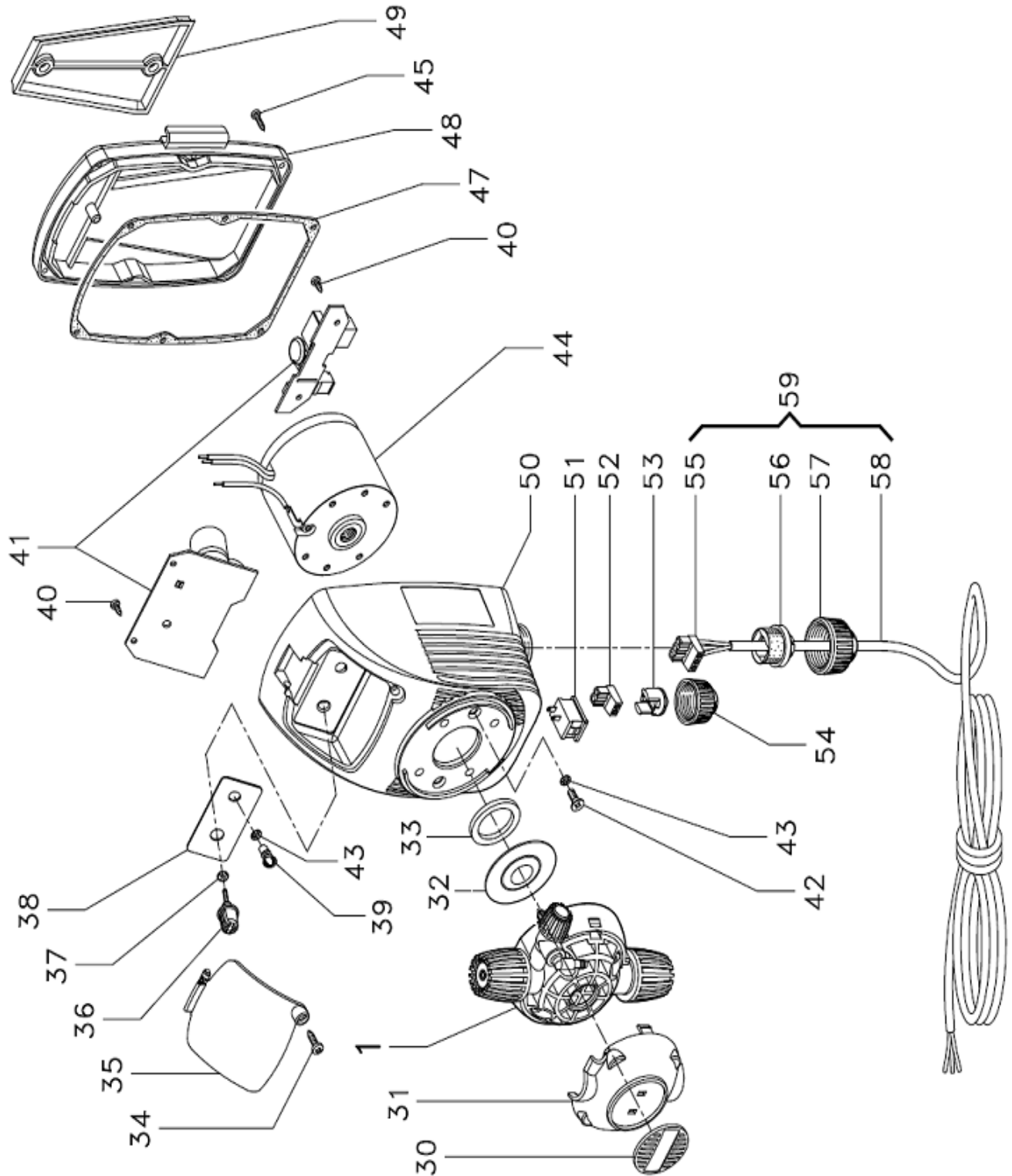
SERIE HC 797

it	Codice	Descrizione	Q.tà
1	ADSP900P000	CORPO POMPA 1-14 PVDF-PTFE-VT COMPLETO HC897	1
	ADSP900P001	CORPO POMPA 1-14 PVDF-PTFE-DT COMPLETO HC897	
	ADSP9000100	CORPO POMPA 1-14 PP-GL-VT COMPLETO HC897	
	ADSP900S000	CORPO POMPA 1-14 PVC-PVDF-CE-VT SPURGO AUTOMATICO COMPLETO HC897	
	ADSP9000102	CORPO POMPA 1-14 PP-CE-VT COMPLETO HC897 (OR2021 PTFE)	
2	ADSP9000022	COVER NERO CORPO POMPA 1-14LT HC897	1
4	ADSP9000003	TARGHETTA NERA CON LOGO AQUA PER CORPO POMPA 1-14LT HC897	1
	ADSP9000023	TARGHETTA NERA NEUTRA PER CORPO POMPA 1-14LT HC897	
5	ADSP9200001	DIAFRAMMA PTFE DYNEON 1614 1-14L HC897 M12X1	1
6	ADSP9200002	FLANGIA PISTONE PP HC897	1
7	ADSP6000708	VITE M 4 X 8 UNI 7688 (AF-TSTC) INOX A2	2
8	MG010370	OR - RIF. 2015 - NBR	2
9	ADSP6020231	CASSA HC797 ARNITE NERA VERSIONE PER CORPO HC897 CON LOGO AQUA	1
	ADSP6020232	CASSA HC797 ARNITE NERA VERSIONE PER CORPO HC897 SENZA LOGO	
10	ADSP7000564	ETICHETTA POLICARBONATO NUOVA HC797	1
13	ADSP6000649	FUSIBILE 1.6 AMPERE RITARDATO (1.6 A T 250V)	1
14	ADSP6000447	MORSETTIERA 2 VIE AK/130	2

15	ADSP6000616A	**SKD HC797- HC100 P-I/2T 230V - EL212PI2T - TON=20ms ** SPECIFICARE IL MODELLO DELLA POMPA (P-I OPPURE 2T) E LA PORTATA (l/h) ** SPECIFY THE MODEL OF PUMP (PI OR 2T) AND THE FLOW RATE (l/h)	1
	ADSP6000618A	SKD HC797/100 MA 230V - EL212MA TON=20ms ** SPECIFICARE LA PORTATA DELLA POMPA (l/h) ** SPECIFY THE FLOW RATE PUMP (l/h)	
	ADSP6000617A	**SKD HC797-HC100 PH/RX 230V - EL212PHRX - TON=20ms ** SPECIFICARE IL MODELLO DELLA POMPA (PH OPPURE RX) E LA PORTATA (l/h) ** SPECIFY THE MODEL OF PUMP (PH OR RX) AND THE FLOW RATE (l/h)	
	ADSP6000609A	SKD HC797 CL V1 230V - EL212CLIN230 TON=20ms ** SPECIFICARE LA PORTATA (l/h) ** SPECIFY THE FLOW RATE PUMP (l/h)	
16	ADSP6000705	VITE M 2,9 X 6,5 UNI 6954 (AF-TCTC) INOX A2	3
17	ADSP6000600	SKD FILTRO EMC (EL210)	1
18	ADSP6000767	VITE M 3,5 X 19 UNI 6954 (AF-TCTC) INOX A2	6
19	ADSP9100202	MAGNETE COMPLETO HC897 05-08 / 10-04 230V	1
21	ADSP6000424	PRESSACAVO PASSO PG7 - 1900.07 - NERO	1
22	ADSP6000836	CONNETTORE MASCHIO 4 VIE G4A5M CABLATO LIVELLO PANDUIT 2 VIE	1
23	ADSP6000714	VITE M 2,9 X 13 UNI 6954 (TCTC) INOX A2	4
24	ADSP6000477	CONNETTORE BNC FEMMINA CABLATO CM 28 RG174	1

25	ADSP6000581	PRESSACAPO + DADO PG9 NERO	1
26	ADSP6020011	CAVO ALIMENTAZIONE S/SPINA METRI 3 - H05VV-F 3X0.75 -	1
27	MG010700	OR-CORDA NEOPRENE CE/CH. D.3MM	0.6
28	ADSP6020226	COPERCHIO POSTERIORE HC797 PP NERO	1
29	ADSP6020221	STAFFA HC100/HC897/HC997 PP NERO	1
30	ADSP7000460	ETICHETTA PVC PH IDEAL-POOL / ER 3000 / HC797	1
	ADSP7000464	ETICHETTA PVC RX IDEAL-POOL / ER 3000 / HC797	
	ADSP7000500	ETICHETTA PVC P-I IDEAL-POOL / ER / HC797 - ADESIVO LATO SCRITTE	
	ADSP7000550	ETICHETTA PVC MA IDEAL-POOL / ER 3000 / HC797 ADESIVO LATO SCRITTE	
	ADSP7000551	ETICHETTA PVC 2T SECONDI-SECONDI IDEAL-POOL / ER 3000 / HC797	
	ADSP7000552	ETICHETTA PVC 2T SECONDI-MINUTI IDEAL-POOL / ER 3000 / HC797	
31	ADSP6020015	GUARNIZIONE 29X18.8 (G30 E-2) PER BASE CONNETTORE LIVELLO	2
32	ADSP6000835	CONNETTORE MASCHIO 4 VIE G4A5M CABLATO SERVIZI PANDUIT 2 VIE	1
33	ADSP6000749	VITE M 2,9 X 9,5 UNI 6954 (AF-TCTC) INOX A2	2
34	ADSP9300029	COPERCHIO FRONTALE TRASPARENTE HC797	1
35	ADSP6000729	VITE M 3,5 X 9,5 UNI 6954 (AF-TCTC) INOX A2	1

Fig. 16 SERIE HC 897 - Esploso / Description / Explose / Dibujo/ Explosionszeichnung / Чертеж



SERIE HC 897

it	Codice	Descrizione	Q.tà
1	ADSP900P000	CORPO POMPA 1-14 PVDF-PTFE-VT COMPLETO HC897	1
	ADSP900P001	CORPO POMPA 1-14 PVDF-PTFE-DT COMPLETO HC897	
	ADSP9000100	CORPO POMPA 1-14 PP-GL-VT COMPLETO HC897	
	ADSP9000102	CORPO POMPA 1-14 PP-CE-VT COMPLETO HC897 (OR2021 PTFE)	
30	ADSP9000003	TARGHETTA NERA CON LOGO AQUA PER CORPO POMPA 1-14LT HC897	1
	ADSP9000023	TARGHETTA NERA NEUTRA PER CORPO POMPA 1-14LT HC897	
31	ADSP9000022	COVER NERO CORPO POMPA 1-14LT HC897	1
32	ADSP9200001	DIAFRAMMA PTFE DYNEON 1614 1-14L HC897 M12X1	1
33	ADSP5007133	OR - RIF. ORM0380-20 - VITON NERO	1
34	ADSP6000767	VITE M 3,5 X 19 UNI 6954 (AF-TCTC) INOX A2	1
35	ADSP9300006	COPERCHIO FRONTALE TRASPARENTE HC897	1
36	ADSP9300004	MANOPOLA REGOLAZIONE HC897 PER TRIMMER PT10 PP NERA	1
37	ADSP5007072	OR "R1" NBR - 2.60X1.90	1
38	ADSP9300012	ETICHETTA HC897 NEUTRA	1
39	ADSP9300005	CONDUTTORE LUMINOSO HC897	1
40	ADSP6000749	VITE M 2,9 X 9,5 UNI 6954 (AF-TCTC) INOX A2	4
41	ADSP9300011	SKD HC897 90-260V LIVELLO - SKD HC897 -	1
42	ADSP6000708	VITE M 4 X 8 UNI 7688 (AF-TSTC) INOX A2	3
43	MG010370	OR - RIF. 2015 - NBR	3
44	ADSP9100200	MAGNETE COMPLETO HC897 05-05 230V	1
	ADSP9100201	MAGNETE COMPLETO HC897 07-04 230V	
	ADSP9100202	MAGNETE COMPLETO HC897 05-08 / 10-04 230V	
45	ADSP6000714	VITE M 2,9 X 13 UNI 6954 (TCTC) INOX A2	6
47	ADSP9300009	OR 2X130 NBR (COPERCHIO HC897)	1
48	ADSP9300001	COPERCHIO HC897 ARNITE NERA	1
49	ADSP6020221	STAFFA HC100/HC897/HC997 PP NERO	1
50	ADSP9300000	CASSA HC897 ARNITE NERA	1
51	ADSP9400002	INTERRUTTORE ON-OFF CON 2 FILI COMPLETO DI CAPOCORDA FASTON FEMMINA	1
52	ADSP9300016	MORSETTO 2 POLI PASSO 3.81 PER LIVELLO HC897	1
53	ADSP9300008	PASSACAVO LIVELLO HC897 GOMMA NAT. 70ShA NERO	1
54	ADSP9300002	GHIERA PRESSA CAVO PER LIVELLO HC897 M20X2 PP NERA	1
55	ADSP9300010	MORSETTO 3 POLI PASSO 5.08 ORIZZONTALE	1
56	ADSP9300007	PASSACAVO ALIMENTAZIONE HC897 GOMMA NAT. 70ShA NERO	1
57	ADSP9300003	GHIERA PRESSA CAVO PER ALIMENTAZIONE HC897 G3/4 PP NERA	1
58	ADSP6020011	CAVO ALIMENTAZIONE S/SPINA METRI 3	1
59	ADSP9400000	CAVO ALIMENTAZIONE HC897 COMPLETO DI GHIERA E PASSACAVO	1

Fig. 17 SERIE HC 997 - Esploso / Description / Explose / Dibujo/ Explosionszeichnung / ртеж

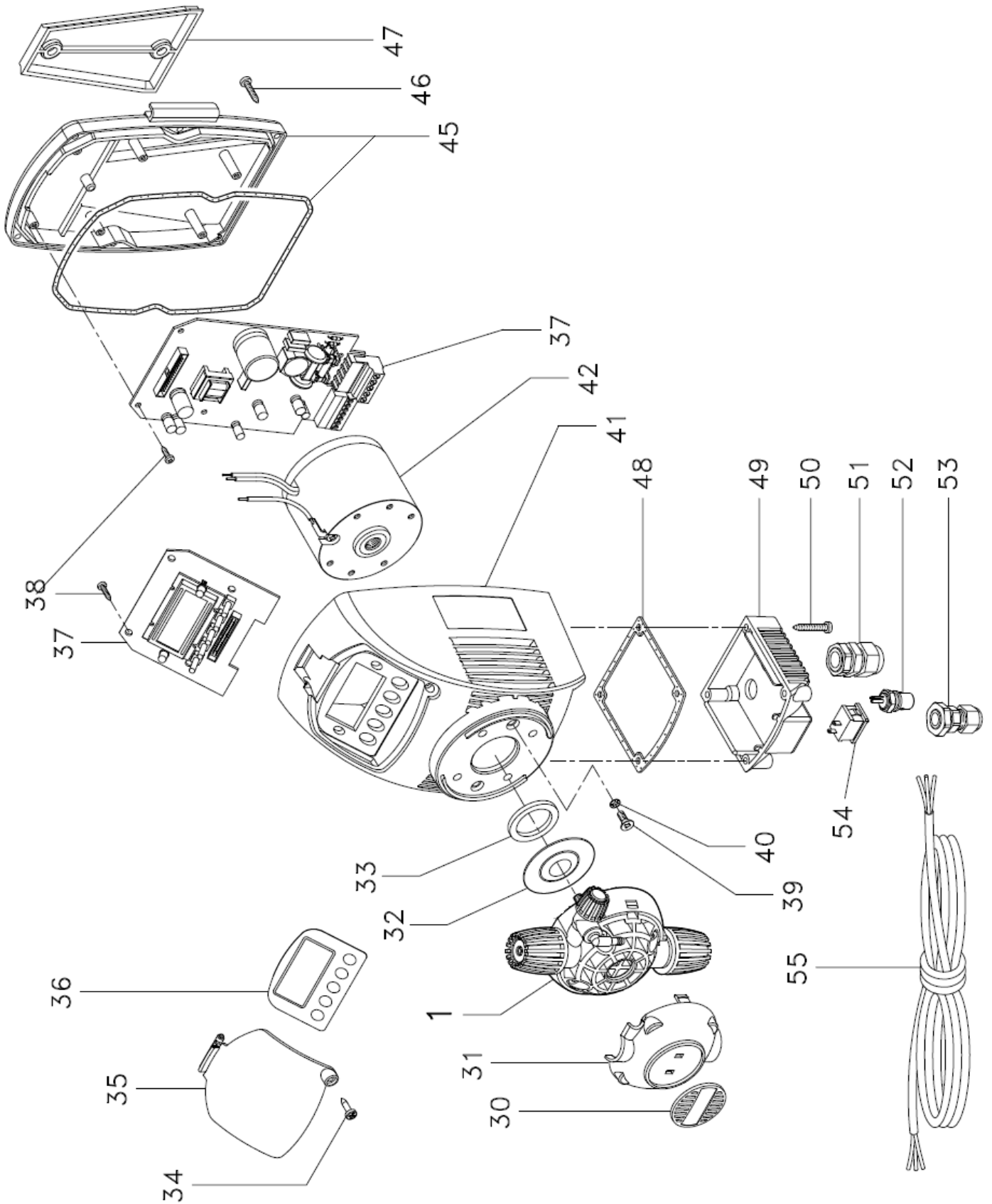
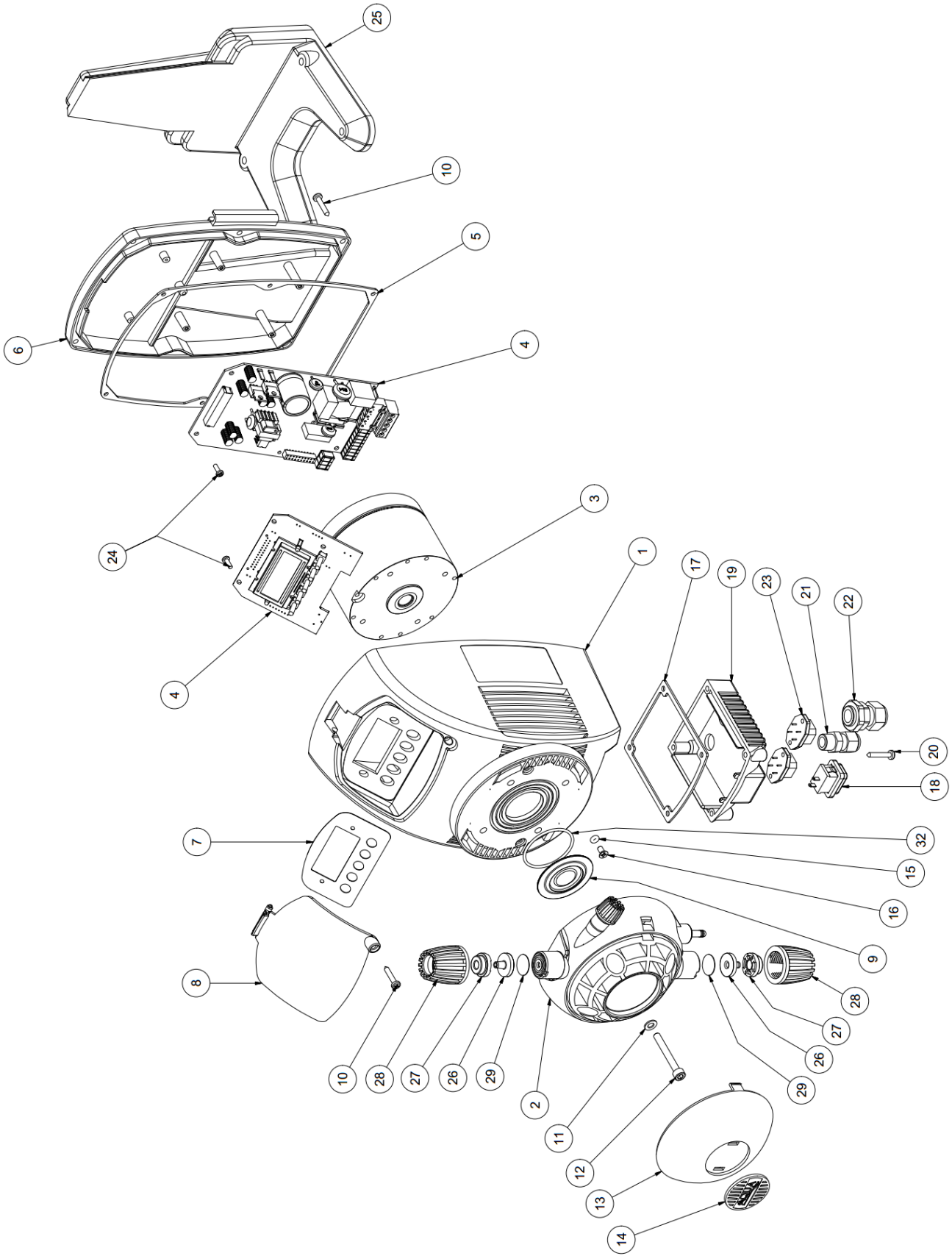


Fig. 18 SERIE HC 899-999 - Esploso / Description / Explose / Dibujo / Explosionszeichnung /Чертеж

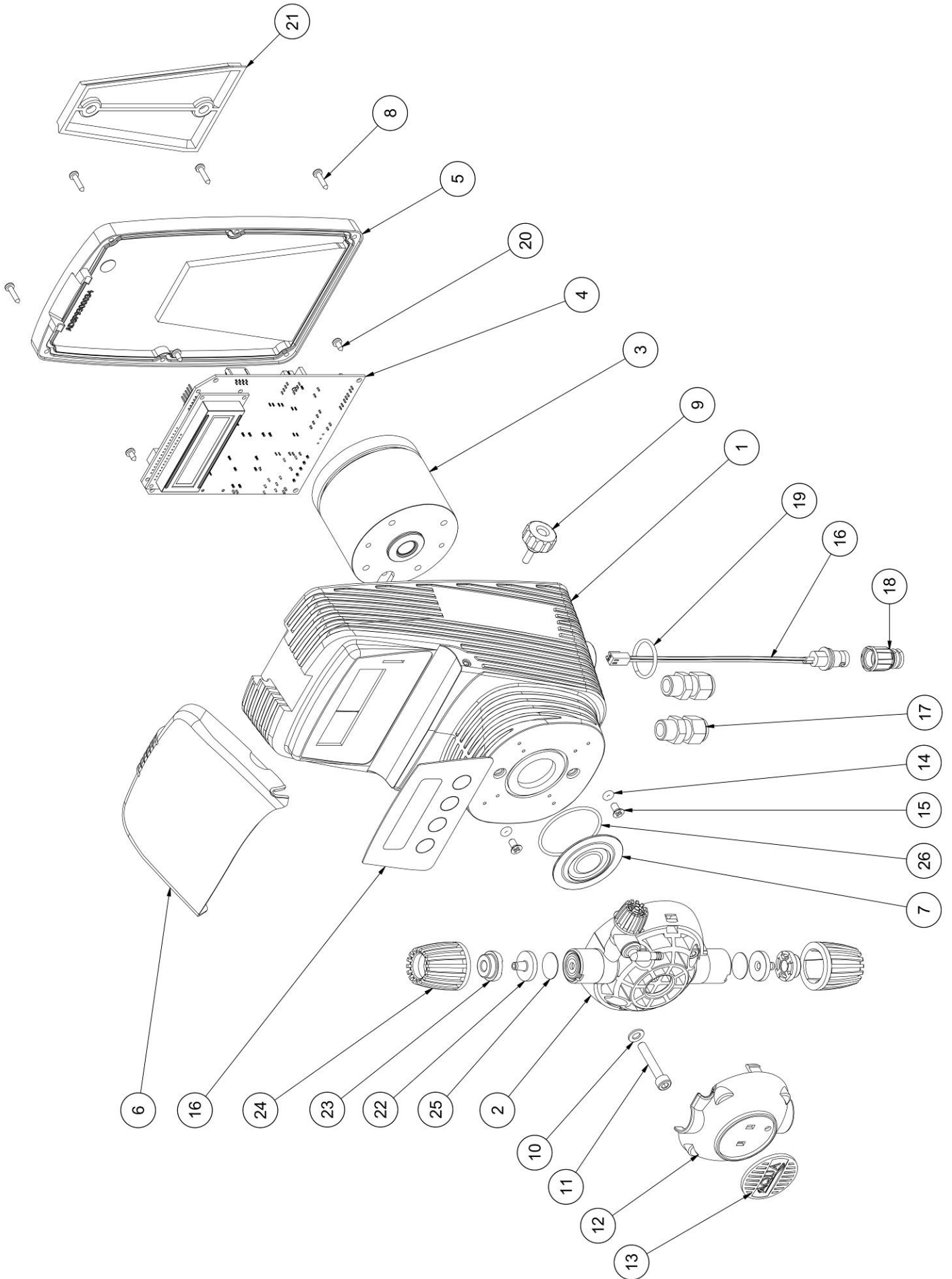
it	Codice	Descrizione	Q.tà
1	ADSP900PI00	CORPO POMPA 1-14 PVDF-PTFE-VT COMPLETO HC897	1
	ADSP900P001	CORPO POMPA 1-14 PVDF-PTFE-DT COMPLETO HC897	
	ADSP9000100	CORPO POMPA 1-14 PP-GL-VT COMPLETO HC897	
	ADSP9000102	CORPO POMPA 1-14 PP-CE-VT COMPLETO HC897 (OR2021 PTFE)	
30	ADSP9000003	TARGHETTA NERA CON LOGO AQUA PER CORPO POMPA 1-14LT HC897	1
	ADSP9000023	TARGHETTA NERA NEUTRA PER CORPO POMPA 1-14LT HC897	
31	ADSP9000022	COVER NERO CORPO POMPA 1-14LT HC897	1
	ADSP9000002	COVER GIALLO RAL 1007 CORPO POMPA 1-14LT HC897	
	ADSP9000017	COVER VERDE RAL 5021 CORPO POMPA 1-14LT HC897	
32	ADSP9200001	DIAFRAMMA PTFE DYNEON 1614 1-14L HC897 M12X1	1
33	ADSP5007133	OR - RIF. ORM0380-20 - VITON NERO	1
34	ADSP6000767	VITE M 3,5 X 19 UNI 6954 (AF-TCTC) INOX A2	1
35	ADSP9300020	COPERCHIO FRONTALE TRASPARENTE HC997	1
36	ADSP9300013	ETICHETTA POLICARBONATO HC997 PH-RX NEUTRA	1
37	ADSP6000603	SKD HC997 PH-RX (EL202 + EL202A + EL211) 90-260V	1
	ADSP6000602	SKD HC997 PI-MA	
	ADSP6000633	SKD HC997 CL (EL202 + EL202A + EL211CL) 90-260V	
	ADSP6000639	SKD HC997 CLJ (EL202 + EL202A + EL211CLJ) 90-260V	
38	ADSP6000749	VITE M 2,9 X 9,5 UNI 6954 (AF-TCTC) INOX A2	6
39	ADSP6000708	VITE M 4 X 8 UNI 7688 (AF-TSTC) INOX A2	3
40	ADSP5007072	OR "R1" NBR - 2.60X1.90	2
41	ADSP9300018	CASSA HC997 ARNITE NERA	1
42	ADSP9100200	MAGNETE COMPLETO HC897 05-05 230V	1
	ADSP9100201	MAGNETE COMPLETO HC897 07-04 230V	
	ADSP9100202	MAGNETE COMPLETO HC897 05-08 / 10-04 230V	
45	ADSP9300017L	COPERCHIO POSTERIORE HC997 ARNITE NERA CON ORING	1
46	MB010900	VITE M 3,5 X 13 UNI 6954 (AF-TCTC) INOX A2	7
47	ADSP6020221	STAFFA HC100/HC897/HC997 PP NERO	1
48	ADSP9000025	GUARNIZIONE COPERCHIETTO ALIMENTAZIONE HC997 GOMMA NBR	1
49	ADSP9400003	COPERCHIETTO ALIMENTAZIONE-SEGNALI HC997 PH-RX COMPLETO	1
50	ADSP6000887	VITE M 3,5 X 22 UNI 6954 (AF-TCTC) INOX A2	4
51	ADSP6000581	PRESSACAVO + DADO PG9 NERO	1
52	ADSP6000494	CONNETTORE BNC FEMMINA CABLATO CM 15 RG174	1
53	ADSP6000424	PRESSACAVO PASSO PG7 - 1900.07 - NERO	3
54	ADSP6000516	INTERRUTTORE ON/OFF 3A 250V TIPO A BILICO CON PROT. GOMMA	1
55	ADSP6020011	CAVO ALIMENTAZIONE S/SPINA METRI 3 - H05VV-F 3X0.75 -	1

SERIE HC 899-999



IT	Codice	Modello	Descrizione	Q.tà
1	ADSP9300030		CASSA HC999 ARNITE NERA D31	1
2	ADSP6000112	1A-2A	CORPO POMPA 4-20/10-10 PP-GL-DT INCOMPLETO - HC999	1
	ADSP6000117	3A	CORPO POMPA 20-05 PP-GL-VT INCOMPLETO - HC999	
3	ADSP6000096	1A - 2A	MAGNETE COMPLETO D90 VERS.1 230V - SILENZIOSO	1
	ADSP6000166	3A	MAGNETE COMPLETO D90 VERS.2-3 230V - SILENZIOSO	
4	ADSP9300040		SKD HC999 PI-MA-CL (EL202+EL202A) 90-260V	1
5	ADSP9300031		GUARNIZIONE HC999 IN GOMMA NBR SP.1,5MM	1
6	ADSP9300023		COPERCHIO HC 999 ARNITE NERA	1
7	ADSP9300027		ETICHETTA POLICARBONATO HC999 NEUTRA	1
8	ADSP9300026		COPERCHIO FRONTALE TRASPARENTE HC999	1
9	ADSP9200001	1A - 2A	DIAFRAMMA PTFE DYNEON 1614 1-14L HC897 M12X1	1
	ADSP6000891	3A	DIAFRAMMA - MEMBRANA IN PTFE D.60X19 - PER 20L-5BAR HC999	
10	ADSP6000767		VITE M 3,5 X 19 UNI 6954 (AF-TCTC) INOX A2	7
11	ADSP6000701		RONDELLA PIANA D. 5 - UNI 6592 INOX A2	4
12	ADSP9000016		VITE M 5 X 30 UNI 5931 (TCEI) INOX A2	4
13	ADSP9300041		COVER IN PP-NERO PER CORPO POMPA HC999	1
14	ADSP9000003		TARGHETTA NERA CON LOGO AQUA PER CORPO POMPA 1-14LT HC897	1
15	ADSP5007072		OR "R1" NBR - 2.60X1.90	2
16	ADSP6000708		VITE M 4 X 8 UNI 7688 (AF-TSTC) INOX A2	2
17	ADSP9000035		GUARNIZIONE COPERCHIETTO ALIMENTAZIONE HC999 GOMMA NBR	1
18	ADSP6000503		INTERRUTTORE BIPOLARE 250V A BILICO SIMBOLO 1/0 CON PROTEZIONE IN GOMMA	1
19	ADSP9300025		COPERCHIO CONNETTORI HC999 ARNITE NERA	1
20	ADSP6000887		VITE M 3,5 X 22 UNI 6954 (AF-TCTC) INOX A2	4
21	ADSP6000424		PRESSACAVO PASSO PG7 - 1900.07 - NERO	1
22	ADSP6000581		PRESSACAVO + DADO PG9 NERO (vn)	1
23	ADSP6000836		CONNETTORE MASCHIO 4 VIE G4A5M CABLATO LIVELLO PANDUIT 2 VIE	2
24	ADSP6000749		VITE M 2,9 X 9,5 UNI 6954 (AF-TCTC) INOX A2	8
25	ADBAS100		BASE SOSTEGNO POMPA HC100 NERA	1
26	ADSP9000014	1A - 2A	ATTACCO TUBO 4X6 GHIERA 1/2" PP	2
	ADSP6000134P	3A	ATTACCO TUBO 6X9 RACCORDO 3/8" PVDF	
27	ADSP9000013	1A - 2A	ADATTATORE TUBO 4X6 GHIERA 1/2" PP	2
	ADSP6001001	3A	ADATTATORE TUBO 6X8 GHIERA 1/2" PVC	
28	ADSP9000012		GHIERA 1/2" PP PER VALVOLA A SFERA NERA	2
29	ADSP9000019		RONDELLA D16X0.5 PE NAT	2
30	ADSP6300910	3A	FLANGIA PISTONE PORTATE MEDIE D.43 - SIL.	1
31	ADSP5007200	1A - 2A	OR - RIF. 3143 - VITON NERO	1
	ADSP5007214	3A	OR - RIF. 3212 - VITON NERO	
32	ADSP5007133	1A - 2A	OR - RIF. ORM0380-20 - VITON NERO	1
	ADSP5007119	3A	OR - RIF. 2212 - VITON NERO	

Fig. 19 SERIE HC 151 - Esploso / Description / Explose / Dibujo / Explosionszeichnung / Чертеж

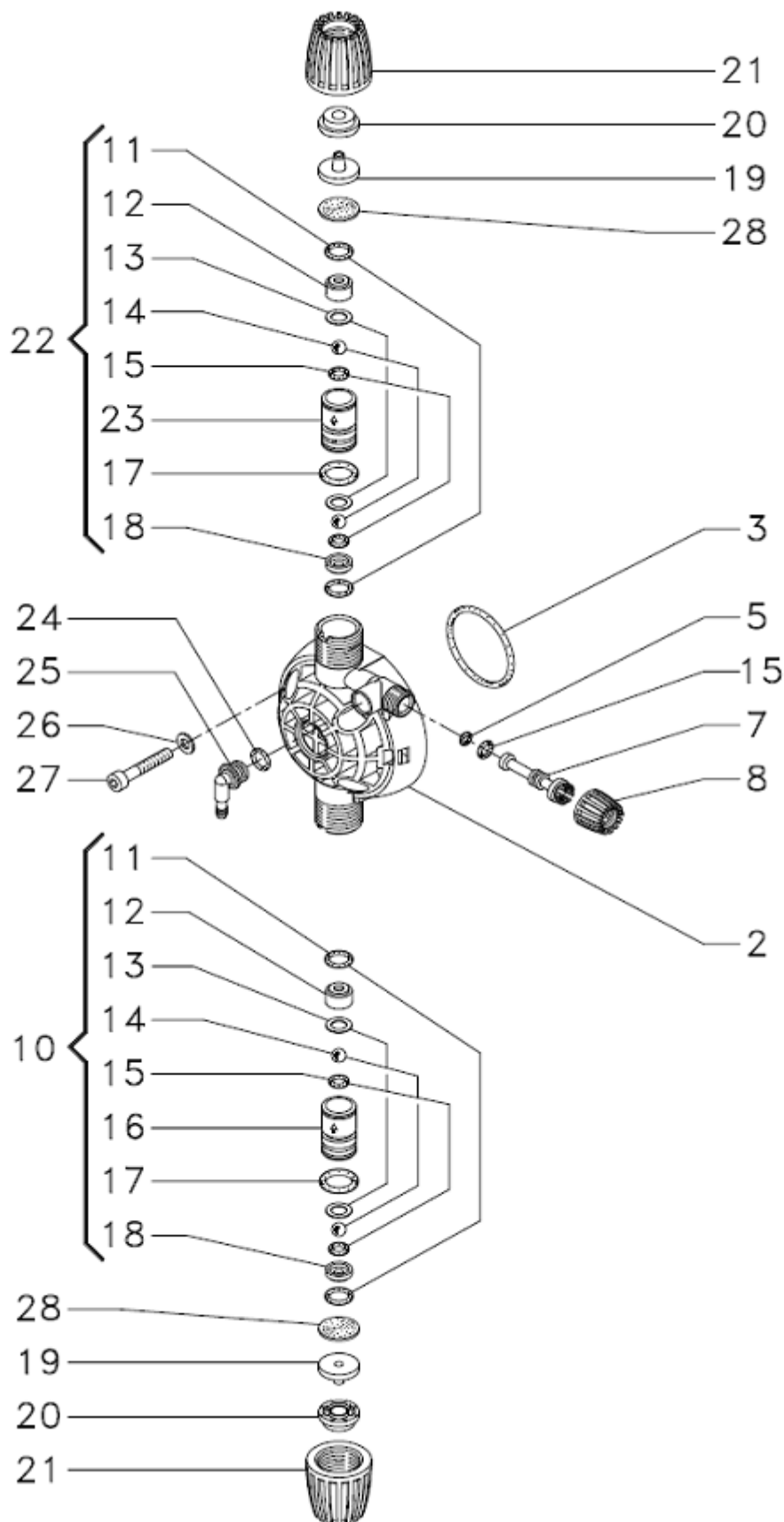


SERIE HC 151

ID	Codice	Descrizione	Q.ta'
1	ADSP9300033	CASSA HC151 DGT PP+20FV NERA	1
2	ADSP9000100	CORPO POMPA 1-14 PP-GL-VT INCOMPLETO HC897	1
3	ADSP6000294	MAGNETE COMPLETO D60 VERS.1 230V - SILENZIOSO	1
	ADSP6000295	MAGNETE COMPLETO D60 VERS.2 230V - SILENZIOSO	
	ADSP6000296	MAGNETE COMPLETO D70 230V - SILENZIOSO	
4	ADSP9300080	SKD HC151 PI-MA 230V	1
	ADSP9300090	SKD HC151 PH-RX 230V	
5	ADSP9300034L	COPERCHIO POSTERIORE HC151 DGT PP NERO C/GUARNIZIONE	1
6	ADSP9300035	VETRINO TRASPARENTE HC151 DGT	1
7	ADSP9200001	DIAFRAMMA PTFE DYNEON 1614 1-14L HC897 M12X1	1
8	ADSP6000714	VITE M 2,9 X 13 UNI 6954 (TCTC) INOX A2	8
9	ADSP8000029L	MANOPOLA FISSAGGIO COPERCHIO POMPE PER ECOWASH	1
10	ADSP6000701	RONDELLA PIANA D. 5 - UNI 6592 INOX A2	4
11	ADSP9000016	VITE M 5 X 30 UNI 5931 (TCEI) INOX A2	4
12	ADSP9000022	COVER NERO CORPO POMPA 1-14LT HC897	1
13	ADSP9000003	TARGHETTA NERA CON LOGO AQUA PER CORPO POMPA 1-14LT HC897	1
14	ADSP5007072	OR "R1" 2,60X1,90 - NBR	2
15	ADSP6000708	VITE M 4 X 8 UNI 7688 (AF-TSTC) INOX A2	3
16	ADSP6000292	CONNETTORE BNC FEMMINA CONN.CRIMP. 2.54 L160 R/N CABLATO PER SIMPOOL	1
17	ADSP6000424	PRESSACAVO PASSO PG7 - 1900.07 - NERO	2
18	ADSP6000948	PROTEZIONE BNC FEMMINA DA PANNELLO GOMMA NERO	1
19	ADSP9500130	ANELLO IDENTIFICATIVO COLORE ROSSO PER INGRESSI PI/ma - HC150	1
20	ADSP6000749	VITE 3X8 (TCTC) INOX A2 - SERIE HILO	4
21	ADSP6020221	STAFFA HC100/HC897/HC997 PP NERO	1
22	ADSP9000014	ATTACCO TUBO 4X6 GHIERA 1/2" PP	2
23	ADSP9000013	ADATTATORE TUBO 4X6 GHIERA 1/2" PP	2
24	ADSP9000012	GHIERA 1/2" PP PER VALVOLA A SFERA NERA	2
25	ADSP9000019	RONDELLA D. 16 X 0,5 PE NAT	2
26	ADSP5007133	OR - RIF. ORM0380-20 38X2 - VITON NERO	1

Fig. 20 HC 797-897-997 Corpo pompa valvole a labbro e sfera / Pump head lip and ball valves / Corps pompe et clapets à lèvres et bille / Cuerpo de la bomba valvulas a labio y a esfera / Pumpenkörper Lippen- und Kugelventile / Головка насоса, губчатый и шариковый клапан

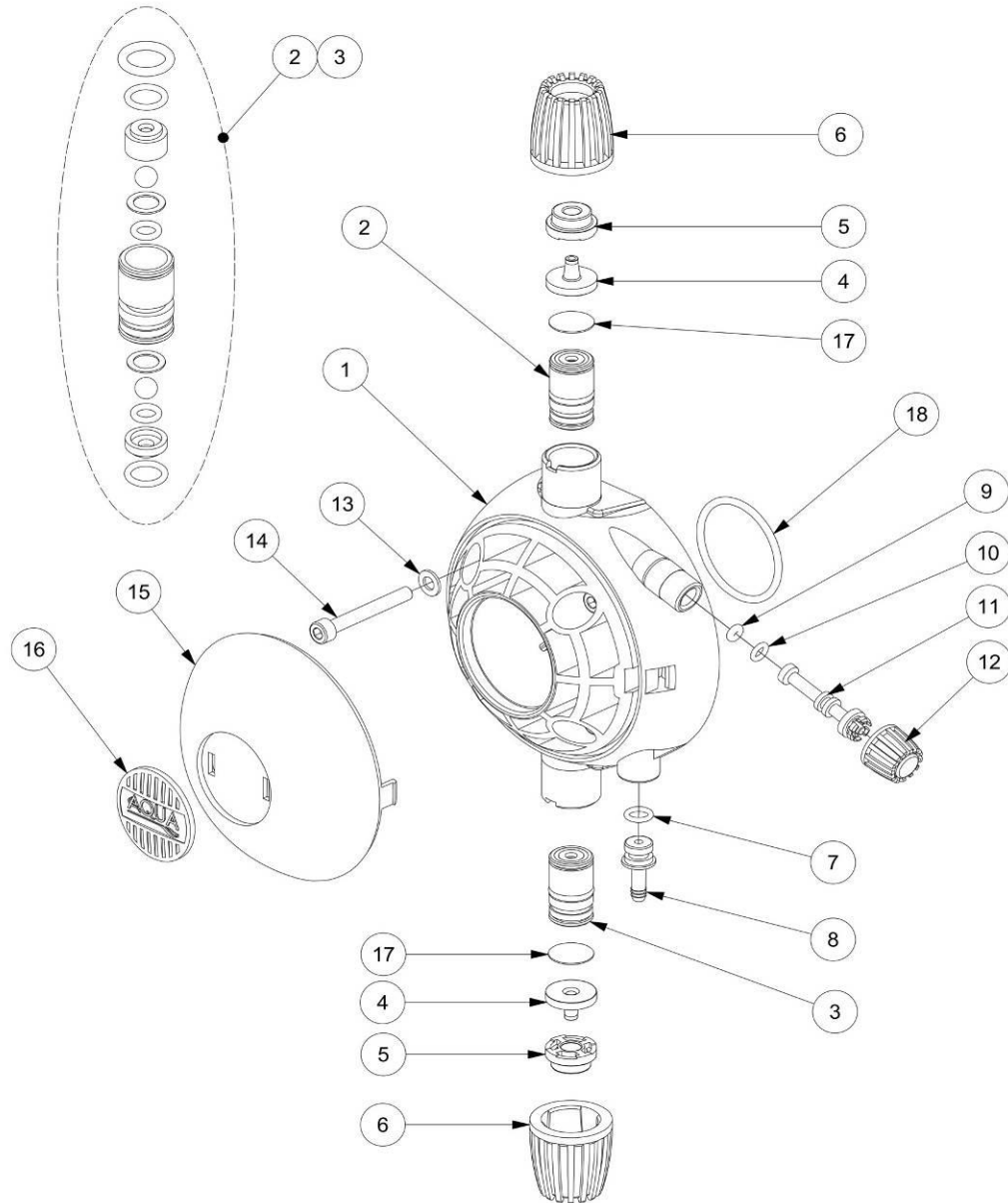
HC797-897-997



SPARE PARTS HC797-897-997 PUMP HEAD

it	Componente	Descrizione	Q.tà
2	ADSP9000001P	CORPO POMPA 1-14 PVDF HC897	1
	ADSP9000001	CORPO POMPA 1-14 PP HC897	1
3	ADSP5007200	OR - RIF. 3143 - VITON NERO	1
	ADSP5007209	OR - RIF. 3143 - DUTRAL NERO	1
5	ADSP5007049V	OR - RIF. 2010 - VITON NERO	1
	ADSP5007055D	OR - RIF. 2010 - DUTRAL NERO	1
7	ADSP9000004P	STELO OTTURATORE PER SPURGO CORPO POMPA HC897 PVDF	1
	ADSP9000004	STELO OTTURATORE PER SPURGO CORPO POMPA HC897 PP	1
8	ADSP9000005P	GHIERA 1/4" PER SPURGO CORPO POMPA HC897 PVDF	1
	ADSP9000005	GHIERA 1/4" PER SPURGO CORPO POMPA HC897 PP	1
10	ADSP9005P00	GRUPPO VALVOLA 1/2" PVDF-PTFE-VT CARTUCCIA ASPIRAZIONE	1
	ADSP9005P02	GRUPPO VALVOLA 1/2" PVDF-PTFE-DT CARTUCCIA ASPIRAZIONE	1
	ADSP9005000	GRUPPO VALVOLA 1/2" PP-GL-VT CARTUCCIA ASPIRAZIONE	1
	ADSP9005003	GRUPPO VALVOLA 1/2" PP-CE-VT CARTUCCIA ASPIRAZIONE (OR 2021 PTFE)	1
11	MG010960	OR - RIF. 108 - VITON NERO	4
	MG010970	OR - RIF. 108 - EPDM	4
12	ADSP9000010P	GUIDA SFERA D.6,35 VALVOLA HC897 PVDF	2
12	ADSP9000010	GUIDA SFERA D.6,35 VALVOLA HC897 PP	2
13	ADSP9000015	RONDELLA SPINGI-OR PER VALVOLA SFERA HC897 D8.3x11.8 SP.0.5MM PTFE	4
14	ADSP5007115	SFERA D.6,35 (1/4") PTFE CLASSE 1	4
	ADSP5007123	SFERA D.6,35 (1/4") CERAMICA	4
	ADSP5007109	SFERA D.6,35 PYREX (VETRO BOROSILICATO G100 D.6,35 1/4")	4
15	ADSP5007203	OR - RIF. 2021 - VITON NERO	5
	ADSP5007207	OR - RIF. 2021 - DUTRAL NERO	5
	ADSP5007212	OR - RIF. 2021 - PTFE	4
16	ADSP9000008P	ASTUCCIO SFERE VALVOLA ASPIRAZIONE HC897 PVDF	1
	ADSP9000008	ASTUCCIO SFERE VALVOLA ASPIRAZIONE HC897 PP	1
17	ADSP5007201	OR - RIF. 3043 - VITON NERO	2
	ADSP5007208	OR - RIF. 3043 - DUTRAL NERO	2
18	ADSP9000011P	SEDE SFERA D.6,35 VALVOLA HC897 PVDF	2
	ADSP9000011	SEDE SFERA D.6,35 VALVOLA HC897 PP	2
19	ADSP9000014P	ATTACCO TUBO 4X6 GHIERA 1/2" PVDF	2
	ADSP9000014	ATTACCO TUBO 4X6 GHIERA 1/2" PP	2
20	ADSP9000013P	ADATTATORE TUBO 4X6 GHIERA 1/2" PVDF	2
	ADSP9000013	ADATTATORE TUBO 4X6 GHIERA 1/2" PP	2
21	ADSP9000012P	GHIERA 1/2" PVDF PER VALVOLA A SFERA	2
	ADSP9000012	GHIERA 1/2" PP PER VALVOLA A SFERA	2
22	ADSP9005P01	GRUPPO VALVOLA 1/2" PVDF-PTFE-VT CARTUCCIA MANDATA	1
	ADSP9005P03	GRUPPO VALVOLA 1/2" PVDF-PTFE-DT CARTUCCIA MANDATA	1
	ADSP9005001	GRUPPO VALVOLA 1/2" PP-GL-VT CARTUCCIA MANDATA	1
	ADSP9005002	GRUPPO VALVOLA 1/2" PP-CE-VT CARTUCCIA MANDATA (OR 2021 PTFE)	1
23	ADSP9000009P	ASTUCCIO SFERE VALVOLA MANDATA HC897 PVDF	1
	ADSP9000009	ASTUCCIO SFERE VALVOLA MANDATA HC897 PP	1
24	ADSP5007035	OR - RIF. 106 - VITON NERO	1
	ADSP5007021	OR - RIF. 106 - DUTRAL	1
25	ADSP9000007P	PORTAGOMMA 4X6 PER SPURGO CORPO POMPA HC897 PVDF	1
	ADSP9000007	PORTAGOMMA 4X6 PER SPURGO CORPO POMPA HC897 PP	1
26	ADSP6000701	RONDELLA D05X10 PIANA INOX	4
27	ADSP9000016	VITE M 5 X 30 UNI 5931 (TCEI) INOX A2	4
28	ADSP9000019	RONDELLA D16X0.5 PE NAT	2

Fig. 21 HC899-999 - Corpo pompa valvole a labbro e sfera / Pump head lip and ball valves / Corps pompe et clapets à lèvres et bille / Cuerpo de la bomba valvulas a labio y a esfera / Pumpenkörper Lippen- und Kugelventile / Головка насоса, губчатый и шариковый клапан



SPARE PARTS HC899-999 PUMP HEAD

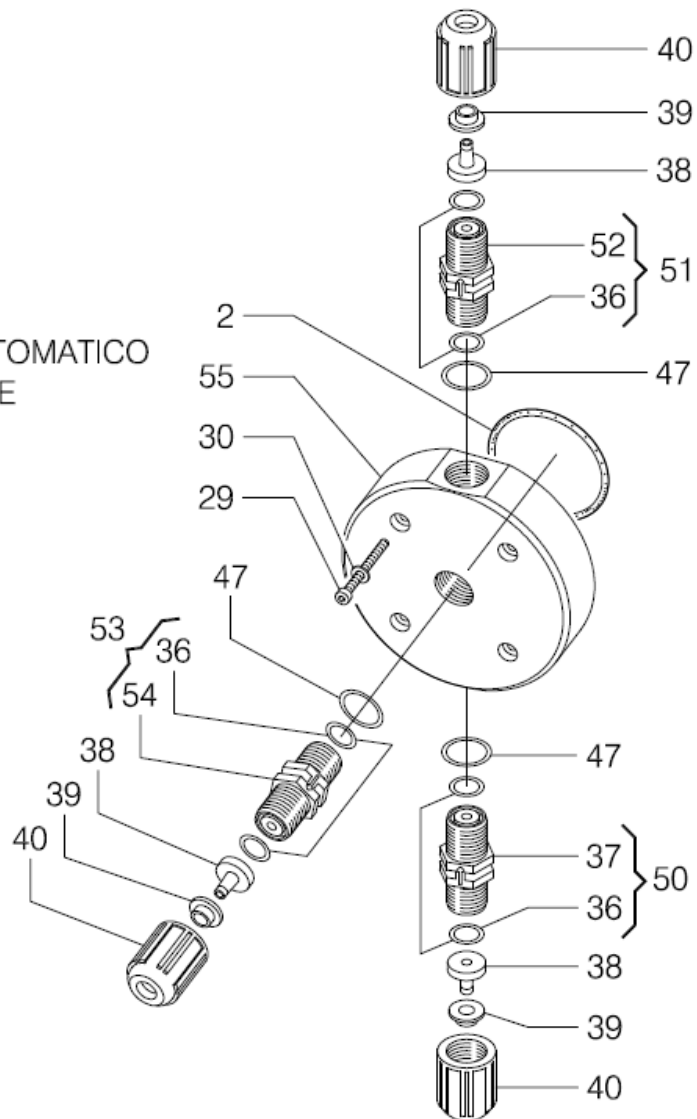
N°	CODICE	Modello	DESCRIZIONE	QTÀ
1	ADSP6000077	1A-2A	CORPO POMPA 4-20/10-10 PP - HC999	1
	ADSP6000794	3A	CORPO POMPA 20-05 PP - HC999	
2	ADSP9005000		GRUPPO VALVOLA 1/2" PP-GL-VT CARTUCCIA ASPIRAZIONE	1
3	ADSP9005001		GRUPPO VALVOLA 1/2" PP-GL-VT CARTUCCIA MANDATA	1
4	ADSP9000014		ATTACCO TUBO 4X6 GHIERA 1/2" PP	2
5	ADSP9000013		ADATTATORE TUBO 4X6 GHIERA 1/2" PP	2
6	ADSP9000012		GHIERA 1/2" PP PER VALVOLA A SFERA NERA	2
7	ADSP5007035		OR RIF. 106 - 1.78x6.75 - VITON NERO	1
8	ADSP6000785		PORTAGOMMA SPURGO CORPO POMPA PP	1
9	ADSP5007072		OR "R1" 2,60X1,90 - NBR	1
10	ADSP6200006		OR - RIF. 2018 - VITON NERO	1
11	ADSP9000004		STELO OTTURATORE PER SPURGO CORPO POMPA HC897 PP	1
12	ADSP9000005		GHIERA 1/4" PER SPURGO CORPO POMPA HC897 PP	1
13	ADSP6000701		RONDELLA PIANA D. 5 - UNI 6592 INOX A2	6
14	MB010700		TCEI - UNI5931 VITE M 5 X 40 UNI 5931 (TCEI) INOX A2-00 00/00/0000	6
15	ADSP9300041		COVER IN PP-NERO PER CORPO POMPA HC999	1
16	ADSP9000003		TARGHETTA NERA CON LOGO AQUA PER CORPO POMPA 1-14LT HC897	1
17	ADSP9000019		RONDELLA D. 16 X 0,5 PE NAT	1
18	ADSP5007200	1A - 2A	OR - RIF. 3143 - VITON NERO	1
	ADSP5007214	3A	OR - RIF. 3212 - VITON NERO	

Fig. 22 Corpo pompa valvole a labbro e sfera / Pump head lip and ball valves / Corps pompe et clapets à lèvres et bille / Cuerpo de bomba con válvulas de labio y bola / Körper der Pumpe mit Lippen- und Kugelventile / Головка насоса с клапанами на губках и шариках

et clapets à lèvres et bille / Cuerpo de bomba con válvulas de labio y bola / Körper der Pumpe mit Lippen- und Kugelventile / Головка насоса с клапанами на губках и шариках

Körper

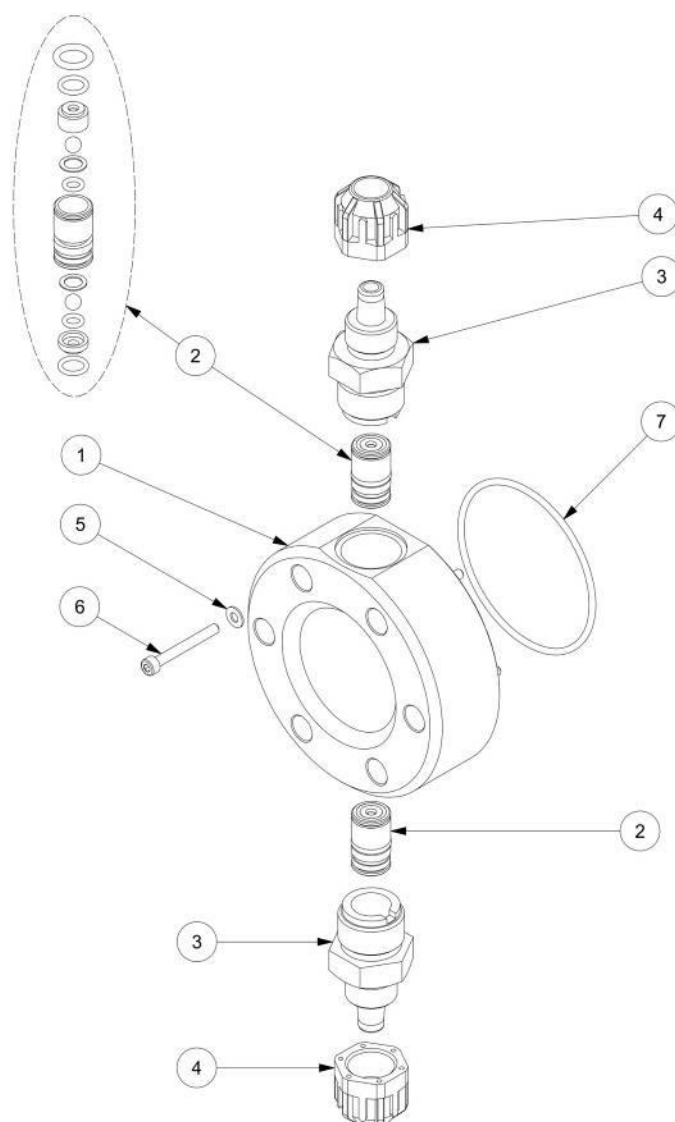
VALVOLE A SFERA CON SPURGO AUTOMATICO
BALL VALVES AUTOMATIC DISCHARGE



SPARE PARTS HC797-897-997 PUMP HEAD

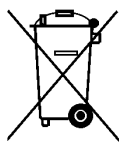
POS	COD	DESCRIZIONE
55	ADSP9000029	CORPO POMPA 1-14 PVC SPURGO AUTOMATICO
2	ADSP5007003	OR 3200 VITON 50,47X2,62 / (PER CORPO POMPA 2-15L - FOR 2-15L PUMP HEAD)
29	MB010040	VITE M 5 X 25 UNI 5931 (TCEI) INOX A2
30	ADSP6000701	RONDELLA PIANA D. 5 - UNI 6592 INOX A2
36	ADSP5007057	OR 2037 VITON 9,25X1,78 /
47	ADSP5007001	OR 2062 VITON NERO 15,60X1,78 /
50	ADSP5005034	GRUPPO VALVOLA 3/8" PVDF-CE-VT / BALL VALVE 3/8" PVDF-CE-VT
53	ADSP5005035	GRUPPO VALVOLA 3/8" PVDF-CE-HAST-VT / BALL VALVE 3/8" PVDF-CE-HAST-VT
51	ADSP5005036	GRUPPO VALVOLA 3/8" PER SPURGO PVDF-CE-VT / BALL VALVE 3/8" AIR DISCHARGE PVDF-CE-VT
38	ADSP6000133P	ATTACCO TUBO 4X6 GHIERA 3/8" PVDF / PVDF BALL VALVE FITTING 4X6 - 3/8"
39	ADSP6000132P	ADATTATORE TUBO 4X6 GHIERA 3/8" PVDF / PVDF BALL VALVE ADAPTATOR 4X6
40	ADSP5004005P	GHIERA 3/8" PVDF PER VALVOLA A SFERA / BALL VALVE 3/8" RING NUT PVDF

Fig. 23 Corpo pompa valvole a sfera / Pump head ball valves / Corps pompe à lèvres et bille / Cuerpo de la bomba valvulas a esfera / Pumpenkörper Lippen- und Kugelventile / Головка насоса, губчатый и шариковый клапан



Livello	Codice componente	Descrizione componente	1^ Quantita' necessaria
1	ADSP6000776	CORPO POMPA 30-02/50-05 PVC NERO - HC999	1
2	ADSP9005000	GRUPPO VALVOLA 1/2" PP-GL-VT CARTUCCIA ASPIRAZIONE	2
3	ADSP6000781	RACCORDO TUBO 10X14 G3/4 PVC PER VALVOLA SFERA	2
4	ADSP5004002	GHIERA FISSATUBO PP NERA 1/2" 10X14	2
5	ADSP6000805	RONDELLA D. 4 (4.3 x 10,4 x 1) - INOX A2	6
6	ADSP6000723	VITE M 4 X 35 UNI 5931 (TCEI) INOX A2	6
7	ADSP5007044	OR - RIF. 3287 - VITON NERO	1

Informazioni per la protezione ambientale



Ai sensi dell'art. 13 del DL n° 151 del 25/07/2005 (attuazione delle direttive 2011/65/EU , 2002/96/CE,2003/108/CE) si comunica che:

I dispositivi elettrici ed elettronici non devono essere considerati rifiuti domestici.

I consumatori sono obbligati dalla legge a restituire i dispositivi elettrici ed elettronici alla fine della loro vita utile a degli idonei centri di raccolta differenziata. Il simbolo del cassonetto barrato riportato sul prodotto, sul manuale di istruzioni o sull'imballo indica che il prodotto è soggetto alle regole di smaltimento previste dalla normativa. Lo smaltimento abusivo del prodotto da parte dell'utente comporta l'applicazione delle sanzioni amministrative previste dal DL n° 151 del 25/07/2005. Col riciclo, e re-utilizzo del materiale e altre forme di utilizzo di dispositivi obsoleti si può rendere un importante contributo alla protezione dell'ambiente.

Note on environmental protection



After the implementation of the European Directive 2002/96/EU in the national legal system, the following applies:

Electrical and electronic devices may not be disposed of with domestic waste. Consumers are obliged by law to return electrical and electronic devices at the end of their service lives to the public collecting points set up for this purpose. Details to this are defined by the national law of the respective country. This symbol on the product, the instruction manual or the package indicates that the product is subject to these regulations. By recycling, reusing the material or other forms of utilising old devices, you are making an important contribution to protecting our environment.

HC797		
Modello Pompa		Assorbimento o Watt
HC797 PI/MA/PH/RX/ CL	MOD 1	14
	MOD 2	16
	MOD 3	16
	MOD 4	20

HC897		
Modello Pompa		Assorbimento Watt
HC897	MOD 1	15
	MOD 2	15
	MOD 3	20
	MOD 4	20

HC997		
Modello Pompa		Assorbimento Watt
HC997 A/B/C/D	MOD 1	18
	MOD 2	18
	MOD 3	22
	MOD 4	22

HC999		
Modello Pompa		Assorbimento Watt
HC999 A/B/C/D	MOD 1	35
	MOD 2	35
	MOD 3	35

HC151		
Modello Pompa		Assorbimento o Watt
HC151	MOD 1	15
	MOD 2	15
	MOD 3	20
	MOD 4	20

HC899		
Modello Pompa		Assorbimento Watt
HC899	MOD 3	35
	MOD 4	35



HC 899

