



Every Day We are IN your life!

**BTS**  
ENGINEERING

<https://prom-nasos.pro>

<https://bts.net.ua>

<https://prom-nasos.com.ua>

+38 095 656-37-57,

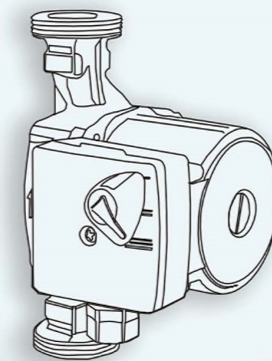
+38 067 360-71-01,

+38 063 362-12-31,

[info@prom-nasos.pro](mailto:info@prom-nasos.pro)

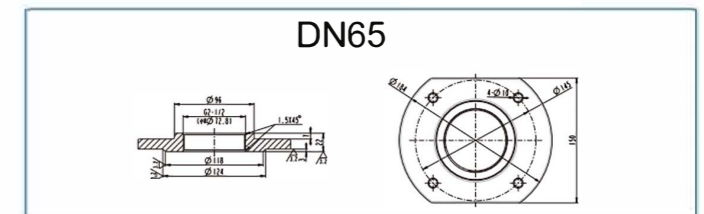
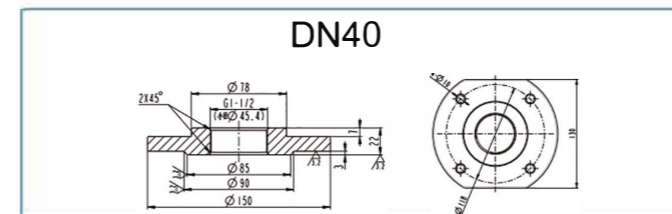
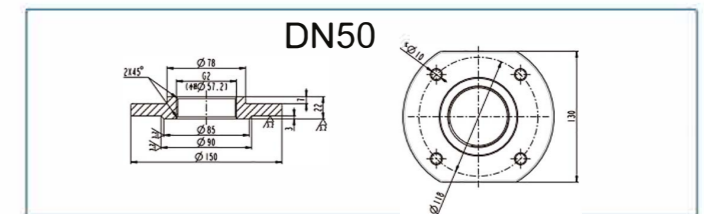
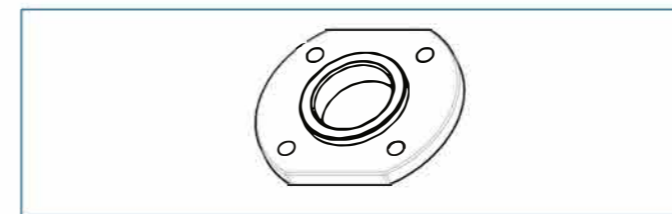
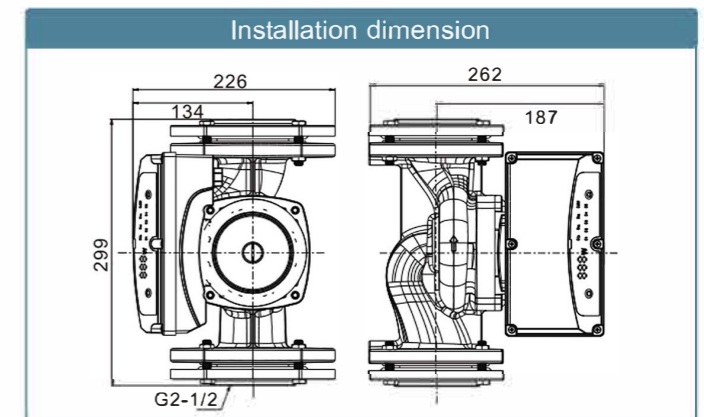
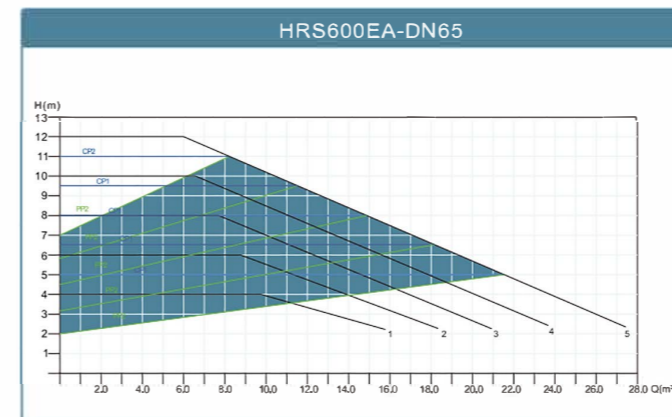
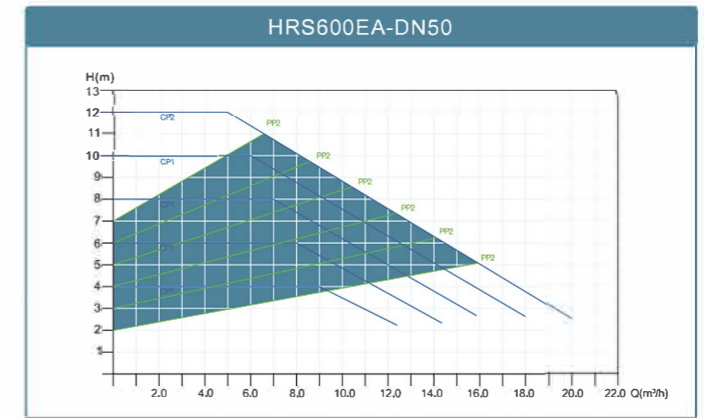
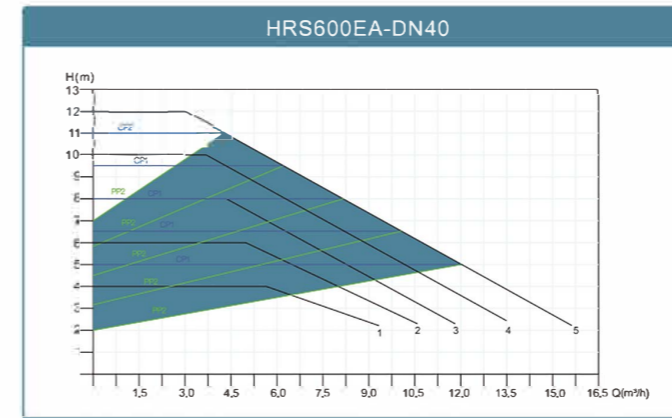


**HRS600EA**



● **Booster Pump Series** ● **Circulating Pump Series** ● **Intelligent Pump Series** ●

CE ISO 9001



	Manual Mode		Light for each speeds
	Proportional Pressure Mode		Mode button
	Constant Pressure Mode		Button for speed change
	ECO Mode		Power display Light

Control Panel Pump Curve	Description
<p>CP2,CP3,CP4</p>	The Operating Point moves back and forth on the curve according to the volume of flow from the system. As shown in the graph, the pump pressure remains constant, not affected by the volume demands of flow.
<p>CP1--Min. Speed CP5--Max.Speed</p>	The two speeds are the min. and Max. ones under constant Pressure, the curve shown as in graph. can not keep constant. It rises and goes down as Manual operation.
<p>PP2,PP3,PP4</p>	The Operating Point moves back and forth on the Proportional Pressure curve according to the volume of flow from system. As shown in the graph. the pump pressure is directly proportional to the flow demands.
<p>CP1--Min. Speed CP5--Max.Speed</p>	The two speeds are the min. and Max. ones under Proportional Pressure, the curve shown as in graph. can not keep constant. It rises and goes down as Manual operation.
<p>ECO</p>	this mode use working as "autoadaptation". It confines the performance of the pumps in aimed scope. As shown in Graph.: 1.Performance can be adjusted according to the scale of system 2.Performance can be adjusted according to the changing of load during a specific period. Under the mode of ECO", the pump is controlled by means of Proportional pressure.

### Technical Parameter

Model	Connection size	Rated Flow	Max. Head	Power	Voltage/Frequency
	(Inch)	(m³/h)	(m)	(W)	(V/Hz)
HRS600EA-DN40	2"	22	12	600	
HRS600EA-DN50	2"	22	12	600	220/50
HRS600EA-DN65	2"	22	12	600	